

## Product datasheet for **AP23331PU-N**

### MMP2 (C-term) Rabbit Polyclonal Antibody

#### Product data:

Product Type:	Primary Antibodies
Applications:	IF, IHC, WB
Recommended Dilution:	Western blot: At 1 µg/ml with the appropriate system to detect MMP2 in cells and tissues. Immunohistochemistry on paraffin sections: At 1-2 µg/ml to detect MMP2 in formalin fixed and paraffin embedded tissues. Immunohistochemistry on frozen sections: At 1-2 µg/ml to detect MMP2 in formalin or acetone fixed tissues. Immunocytochemistry: At 1-2 µg/ml to detect MMP2 in acetone fixed cell. Antigen retrieval by Pepsin and Trypsin is required.
Reactivity:	Human, Mouse, Rat
Host:	Rabbit
Isotype:	IgG
Clonality:	Polyclonal
Immunogen:	A synthetic peptide corresponding to a sequence at the C-terminal of human MMP2
Specificity:	This antibody detects MMP-2 (C-term).
Formulation:	5mg BSA, 0.9mg NaCl, 0.2mg Na <sub>2</sub> HPO <sub>4</sub> , 0.05mg Thimerosal, 0.05mg Na <sub>3</sub> N State: Aff - Purified State: Lyophilized Ig fraction
Reconstitution Method:	0.2ml of distilled water will yield a concentration of 500 µg/ml.
Purification:	Immunogen affinity purified
Conjugation:	Unconjugated
Storage:	Store undiluted at 2-8°C for one month or (in aliquots) at -20°C for longer. Avoid repeated freezing and thawing.
Stability:	Shelf life: one year from despatch.
Gene Name:	matrix metalloproteinase 2
Database Link:	<a href="#">Entrez Gene 17390 Mouse</a> <a href="#">Entrez Gene 81686 Rat</a> <a href="#">Entrez Gene 4313 Human</a> <a href="#">P08253</a>



[View online »](#)

**Background:**

Matrix metalloproteinase-2 (MMP2) is a Type IV collagenase, 72-kD, which is also known as gelatinase1 and is a member of a group of secreted zinc metalloproteases. The MMP2 gene is 17 kb long with 13 exons varying in size from 110 to 901 bp and 12 introns ranging from 175 to 4,350 bp, located within a region of human chromosome 16q13. In addition, The extra exons encode the amino acids of the fibronectin-like domain which has so far been found in only the 72- and 92-kDa type IV collagenase. MMP2, which has a critical role in the binding of progelatinase A and TIMP4 via the C-terminal hemopexin-like domain (C domain), is functionally associated on the surface of angiogenic blood vessels. NOT only is a likely effector of endometrial menstrual breakdown, MMP2 is also effector and regulator of the inflammatory response. Moreover, MMP2 could be helpful in diagnosing Takayasu arteritis.

**Synonyms:**

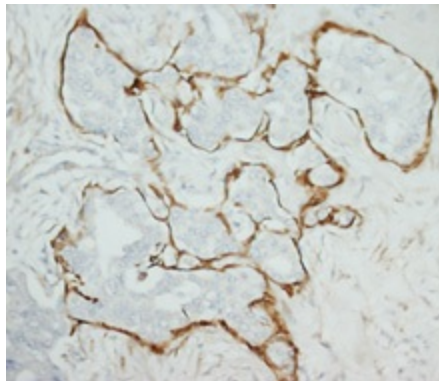
MMP2, CLG4A, 72 kDa gelatinase, Matrix metalloproteinase-2, Gelatinase A, TBE-1

**Protein Families:**

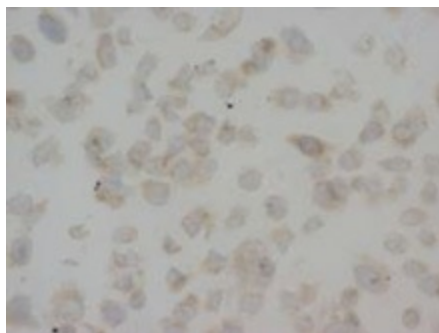
Druggable Genome, Protease

**Protein Pathways:**

Bladder cancer, GnRH signaling pathway, Leukocyte transendothelial migration, Pathways in cancer

**Product images:**

MMP2 Polyclonal Antibody



MMP2 Polyclonal Antibody