

Product datasheet for **AP23329PU-N**

MMP16 (C-term) Rabbit Polyclonal Antibody

Product data:

Product Type:	Primary Antibodies
Applications:	IHC, WB
Recommended Dilution:	Western blot: At 1-2µg/ml with the appropriate system to detect MMP16 in cells and tissues. Immunohistochemistry on paraffin sections: At 0.5-1µg/ml to detect MMP16 in formalin fixed and paraffin embedded tissues. Immunohistochemistry on frozen sections: At 0.5-1µg/ml to detect MMP16 in formalin or acetone fixed tissues.
Reactivity:	Human, Mouse, Rat
Host:	Rabbit
Isotype:	IgG
Clonality:	Polyclonal
Immunogen:	Synthetic peptide mapping at the C-terminal of human MMP16
Specificity:	This antibody detects MMP-16 at C-term.
Formulation:	5mg BSA, 0.9mg NaCl, 0.2mg Na ₂ HPO ₄ , 0.05mg Thimerosal, 0.05mg Na ₃ State: Aff - Purified State: Lyophilized Ig fraction
Reconstitution Method:	0.2ml of distilled water will yield a concentration of 500µg/ml.
Purification:	Immunogen affinity purified
Conjugation:	Unconjugated
Storage:	Store at 2 - 8 °C for up to one month or (in aliquots) at -20 °C for longer. Avoid repeated freezing and thawing.
Stability:	Shelf life: one year from despatch.
Gene Name:	matrix metalloproteinase 16
Database Link:	Entrez Gene 17389 Mouse Entrez Gene 65205 Rat Entrez Gene 4325 Human P51512



[View online »](#)

Background:

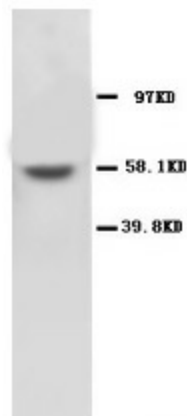
The matrix metalloproteinase 16(MMP16) protein consists of 604 amino acids and has a characteristic MMP domain structure, which gene is mapped on human chromosome 8q21. Additionally, MMP16 has a C-terminal extension containing a potential transmembrane domain, similar to MMP14 , MMP15 , and MMP172. Furthermore, it is membrane-bound and is a member of the membrane-type MMPs that are a subclass in the MMP family since the other members lack a C-terminal transmembrane domain and are secreted as soluble forms. MMP16 is expressed as a 12-kb transcript in brain, placenta, heart, and some carcinoma cell lines, but is not detectably expressed in lung, kidney, liver, spleen, and muscle.

Synonyms:

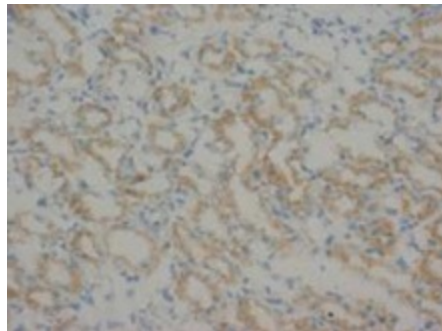
Matrix metalloproteinase-16, MMP-X2, MMP16, MMPX2, Membrane-type-3 matrix metalloproteinase

Protein Families:

Druggable Genome, Protease, Secreted Protein, Transmembrane

Product images:


MMP16 Polyclonal Antibody



MMP16 Polyclonal Antibody