

Product datasheet for **AP23325PU-N**

Cytochrome P450 2E1 (CYP2E1) (C-term) Rabbit Polyclonal Antibody

Product data:

Product Type:	Primary Antibodies
Applications:	IHC, WB
Recommended Dilution:	Western blot: At 1-2µg/ml with the appropriate system to detect P450IIE1 in cells and tissues. Immunohistochemistry on paraffin sections: At 1-2µg/ml to detect P450IIE1 in formalin fixed and paraffin embedded tissues. Boiling the sections is required. Immunohistochemistry on frozen sections: At 1-2µg/ml to detect P450IIE1 in formalin or acetone fixed tissues.
Reactivity:	Human, Mouse, Rat
Host:	Rabbit
Isotype:	IgG
Clonality:	Polyclonal
Immunogen:	A synthetic peptide mapping at the C-terminal of human P450IIE1
Specificity:	This antibody detects CYP2E1 (C-term).
Formulation:	5mg BSA, 0.9mg NaCl, 0.2mg Na ₂ HPO ₄ , 0.05mg Thimerosal, 0.05mg Na ₃ State: Aff - Purified State: Lyophilized Ig fraction
Reconstitution Method:	0.2ml of distilled water will yield a concentration of 500µg/ml.
Purification:	Immunogen affinity purified
Conjugation:	Unconjugated
Storage:	Store at 2 - 8 °C for up to one month or (in aliquots) at -20 °C for longer. Avoid repeated freezing and thawing.
Stability:	Shelf life: one year from despatch.
Gene Name:	cytochrome P450 family 2 subfamily E member 1
Database Link:	Entrez Gene 13106 Mouse Entrez Gene 25086 Rat Entrez Gene 1571 Human P05181



[View online »](#)

Background:

P450IIE1, also known as CYP2E1, is a member of the P450IIE subfamily which is ethanol-inducible. It has at least 1 gene which is mapped to 10q24.3-qter, and a second is likely in rat and in man¹. Both the rat and human proteins encoded by this gene contain 493 amino acids and calculated molecular masses of 56,634 and 56,916 daltons, respectively². In addition, genetic polymorphisms in the 5-prime flanking region of the human P450IIE1 gene affected its binding of transacting factor and changed its transcriptional regulation, which may lead to interindividual differences of microsomal drug oxidation activity³. P450IIE1 is an important enzyme for the catalysis of the conversion of ethanol to acetaldehyde and to acetate in humans, and it is also involved in the metabolism of nitrosamines. Due to the possible correlation of P450IIE1 genes with malignancy, clinical studies of RFLP patterns of these genes in cancer may be useful.

Synonyms:

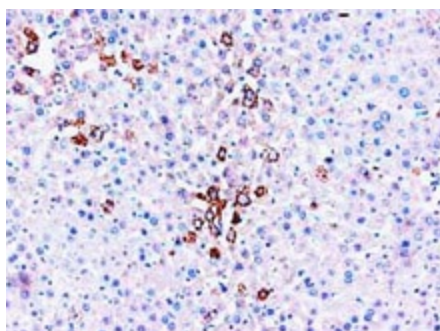
Cytochrome P450 2E1, CYP2E, CYP1IIE1, Cytochrome P450-J

Protein Families:

Druggable Genome, P450, Transmembrane

Protein Pathways:

Arachidonic acid metabolism, Drug metabolism - cytochrome P450, Linoleic acid metabolism, Metabolic pathways, Metabolism of xenobiotics by cytochrome P450

Product images:

Cytochrome P450 family 2 subfamily E polypeptide 1 P450IIE1 Polyclonal Antibody