

## Product datasheet for **AP23320PU-N**

### CHRNA1 Rabbit Polyclonal Antibody

#### Product data:

Product Type:	Primary Antibodies
Applications:	IHC, WB
Recommended Dilution:	<b>Western blot:</b> 0.75 µg/ml. <b>Immunohistochemistry on Paraffin Sections</b> (1-2.0 µg/ml). Antigen retrieval by heat is recommended.
Reactivity:	Human, Mouse, Rat
Host:	Rabbit
Isotype:	IgG
Clonality:	Polyclonal
Immunogen:	A synthetic peptide corresponding to a sequence at the N-terminal of Human CHRNA1, identical to the related Rat and Mouse sequence
Specificity:	Recognizes CHRNA1
Formulation:	5mg BSA, 0.9mg NaCl, 0.2mg Na <sub>2</sub> HPO <sub>4</sub> , 0.05mg Thimerosal and 0.05mg Sodium Azide State: Aff - Purified State: Lyophilized purified IgG fraction
Reconstitution Method:	Restore with 0.2 ml of distilled water to yield a concentration of 0.5 mg/ml.
Concentration:	0.5 mg/ml (after reconstitution)
Purification:	Immunoaffinity Chromatography
Conjugation:	Unconjugated
Storage:	Store the antibody after reconstitution at 2-8°C for one month or (in aliquots) at -20°C for longer. Avoid repeated freezing and thawing.
Stability:	Shelf life: one year from despatch.
Gene Name:	cholinergic receptor nicotinic alpha 1 subunit
Database Link:	<a href="#">Entrez Gene 11435 Mouse</a> <a href="#">Entrez Gene 79557 Rat</a> <a href="#">Entrez Gene 1134 Human P02708</a>



[View online »](#)

**Background:**

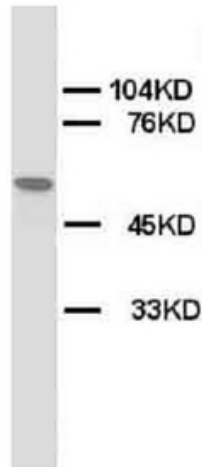
CHRNA, also termed ACHRA, is mapped on 2q24-q32. This gene encodes the alpha subunit of the muscle acetylcholine receptor, which is the main target of pathogenic autoantibodies in autoimmune myasthenia gravis. (1) The protein-coding sequence of the human alpha subunit gene is divided into 9 exons that correspond to different structural and functional domains of the precursor molecule. (2)

**Synonyms:**

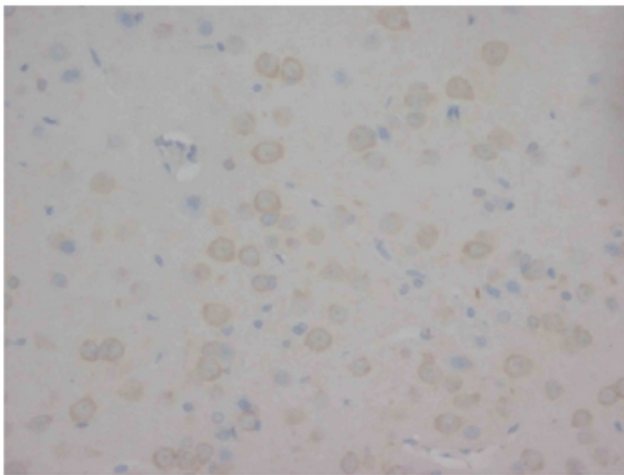
CHRNA1, ACHRA, CHNRA

**Protein Families:**

Druggable Genome, Ion Channels: Cys-loop Receptors, Transmembrane

**Product images:**


Western blot on Rat skeletal muscle lysis using CHRNA1 antibody.



Immunohistochemistry on Paraffin Sections of Rat brain using CHRNA1 antibody.