

Product datasheet for **AP23319PU-N**

CD40 (N-term) Rabbit Polyclonal Antibody

Product data:

Product Type:	Primary Antibodies
Applications:	WB
Recommended Dilution:	Western blot: 1-2µg/ml with the appropriate system to detect CD40 in cells and tissues.
Reactivity:	Human, Mouse, Rat
Host:	Rabbit
Isotype:	IgG
Clonality:	Polyclonal
Immunogen:	A synthetic peptide corresponding to a sequence at the N-terminal of mouse CD40
Specificity:	This antibody detects CD40 (N-term).
Formulation:	50% glycerol, 0.9mg NaCl, 0.2mg Na ₂ HPO ₄ State: Aff - Purified State: Lyophilized Ig fraction
Reconstitution Method:	1.2% sodium acetate or neutral PBS. If 0.5ml of PBS is used, the antibody concentration will be 100µg/ml.
Purification:	Immunogen affinity purified
Conjugation:	Unconjugated
Storage:	Store at 2 - 8 °C for up to one month or (in aliquots) at -20 °C for longer. Avoid repeated freezing and thawing.
Stability:	Shelf life: one year from despatch.
Gene Name:	CD40 molecule
Database Link:	Entrez Gene 21939 Mouse Entrez Gene 171369 Rat Entrez Gene 958 Human P25942



[View online »](#)

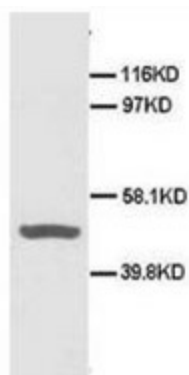
Background: CD40 is a cell surface receptor that is expressed on the surface of all mature B cells and also expressed on monocytes, dendritic cells, and thymic epithelium. CD40 is a member of the tumor necrosis factor (TNF) receptor superfamily and is the receptor for CD40 ligand. CD40 ligand (CD40L, CD154, gp39, and TRAM) belongs to the TNF gene family and is expressed more widely than CD40 predominantly on activated CD4+ T cells. Activation of CD40 has also been shown to inhibit the growth of certain B cell lymphomas and to induce the death of transformed cells of mesenchymal or epithelial origin.

Synonyms: TNFRSF5, CDw40, Bp50

Protein Families: Druggable Genome, Secreted Protein, Transmembrane

Protein Pathways: Allograft rejection, Asthma, Autoimmune thyroid disease, Cell adhesion molecules (CAMs), Cytokine-cytokine receptor interaction, Primary immunodeficiency, Systemic lupus erythematosus, Toll-like receptor signaling pathway, Viral myocarditis

Product images:



Western blot analysis of HeLa cell lysis using CD40 antibody