

Product datasheet for **AP23315PU-N**

Dopamine Receptor D1 (DRD1) (C-term) Rabbit Polyclonal Antibody

Product data:

Product Type:	Primary Antibodies
Applications:	WB
Recommended Dilution:	Western blot: 1µg/ml.
Reactivity:	Human, Mouse, Rat
Host:	Rabbit
Isotype:	IgG
Clonality:	Polyclonal
Immunogen:	A synthetic peptide corresponding to a sequence at the C-terminal of human DRD1
Specificity:	This antibody detects Dopamine D1 Receptor at C-term.
Formulation:	5mg BSA, 0.9mg NaCl, 0.2mg Na ₂ HPO ₄ , 0.05mg Thimerosal, 0.05mg Na ₃ N State: Aff - Purified State: Lyophilized Ig fraction
Reconstitution Method:	0.2ml of distilled water will yield a concentration of 500µg/ml.
Purification:	Immunogen affinity purified
Conjugation:	Unconjugated
Storage:	Store at 2 - 8 °C for up to one month or (in aliquots) at -20 °C for longer. Avoid repeated freezing and thawing.
Stability:	Shelf life: one year from despatch.
Gene Name:	dopamine receptor D1
Database Link:	Entrez Gene 13488 Mouse Entrez Gene 24316 Rat Entrez Gene 1812 Human P21728



[View online »](#)

Background:

Dopamine receptor D1, also known as DRD1, is a human gene. It is the most highly expressed DA receptor subtype among the DA receptor family. Receptors for dopamine have been classified into two functional types, D1 and D2. They belong to the family of receptors acting through G (or guaninenucleotide-binding) proteins. D2 receptors inhibit adenylyl cyclase, but D1 receptors stimulate adenylyl cyclase and activate cyclic AMP-dependent protein kinases. Dopamine D1 and D2 receptors are targets of drug therapy in many psychomotor disorders, including Parkinson's disease and schizophrenia, and may also have a role in drug addiction and alcoholism. D1 receptors regulate neuron growth and differentiation, influence behaviour and modify dopamine D2 receptor-mediated events. And the presence of a D1 receptor gene restriction fragment length polymorphism will be helpful for future disease linkage studies. DRD1 also regulates the neurochemical architecture of the striatum and is critical for the normal expression of motor activity.

Synonyms:

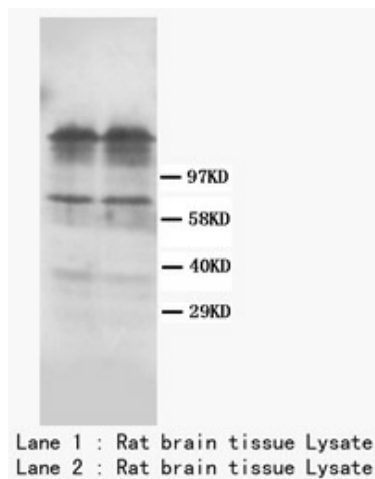
DRD1

Protein Families:

Druggable Genome, GPCR, Transmembrane

Protein Pathways:

Calcium signaling pathway, Gap junction, Neuroactive ligand-receptor interaction

Product images:

DRD1 Polyclonal Antibody