

## Product datasheet for **AP23313PU-N**

### FGFR2 (C-term) Rabbit Polyclonal Antibody

#### Product data:

Product Type:	Primary Antibodies
Applications:	IHC, WB
Recommended Dilution:	<b>Western blot:</b> Use at 1 µg/ml with the appropriate system to detect FGFR2 in cells and tissues. <b>Immunohistochemistry on Paraffin Sections:</b> Use at 2 µg/ml to detect FGFR2 in Formalin Fixed and Paraffin Embedded tissues (Antigen Retrieval by heat is required).
Reactivity:	Human, Mouse, Rat
Host:	Rabbit
Isotype:	IgG
Clonality:	Polyclonal
Immunogen:	A synthetic peptide corresponding to a sequence at the C-terminal of Human FGFR2, identical to the related Rat and Mouse sequence.
Specificity:	Recognizes CD332 / FGFR-2. No cross reactivity with other proteins.
Formulation:	5mg BSA, 0.9mg NaCl, 0.2mg Na <sub>2</sub> HPO <sub>4</sub> , 0.05mg Thimerosal and 0.05mg Sodium Azide State: Aff - Purified State: Lyophilized purified IgG fraction
Reconstitution Method:	Restore with 0.2 ml of distilled water to yield a concentration of 0.5 mg/ml.
Concentration:	0.5 mg/ml (after reconstitution)
Purification:	Immunoaffinity Chromatography
Conjugation:	Unconjugated
Storage:	Store the antibody after reconstitution at 2-8°C for one month or (in aliquots) at -20°C for longer. Avoid repeated freezing and thawing.
Stability:	Shelf life: one year from despatch.
Gene Name:	fibroblast growth factor receptor 2
Database Link:	<a href="#">Entrez Gene 14183 Mouse</a> <a href="#">Entrez Gene 25022 Rat</a> <a href="#">Entrez Gene 2263 Human</a> <a href="#">P21802</a>



[View online »](#)

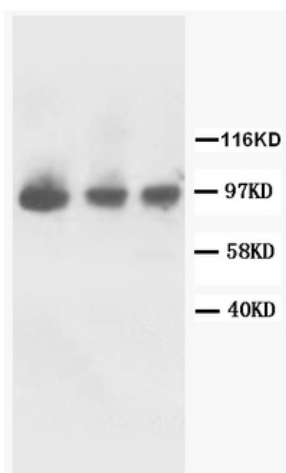
**Background:** Fibroblast growth factor receptor 2 (FGFR2) is a receptor for fibroblast growth factor encoded on a gene residing on chromosome 10. FGFR2 has also been designated as CD332. FGFR2 is a membrane-spanning tyrosine kinase that serves as a high affinity receptor for several members of the fibroblast growth factor (FGF) family. Its signals are absolutely required for vertebrate limb induction and that an FGFR2 signal is essential for the reciprocal regulation loop between FGF8 and FGF10 during limb induction. (1)  
FGFR2 contributes to the outgrowth, differentiation, and maintenance of the inner cell mass and raise the possibility that this activity is mediated by FGF4 signals transmitted by FGFR2. The role of early FGF signaling in pregastrulation development as a possible adaptation to mammalian (amniote) embryogenesis is discussed. (2)

**Synonyms:** FGFR2, BEK, KGFR, KSAM

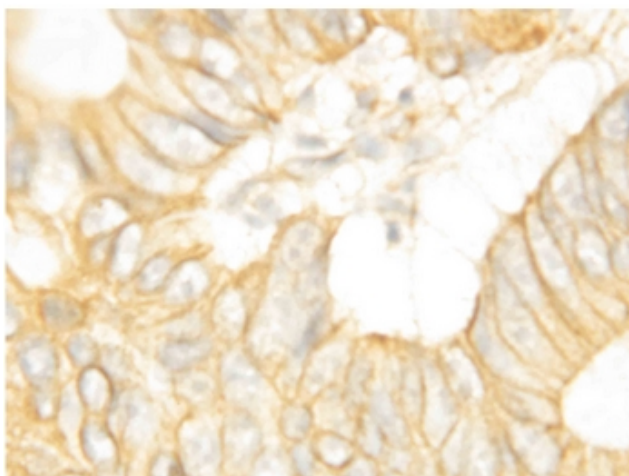
**Protein Families:** Druggable Genome, Protein Kinase, Secreted Protein, Transmembrane

**Protein Pathways:** Endocytosis, MAPK signaling pathway, Pathways in cancer, Prostate cancer, Regulation of actin cytoskeleton

### Product images:



Lane 1: Rat Kidney Tissue Lysate. Lane 2: Rat Liver Tissue Lysate. Lane 3: Human Placenta Tissue Lysate.



Immunohistochemical staining of Human Intestines Cancer