

## Product datasheet for **AP23309PU-N**

### CD40L (CD40LG) (N-term) Rabbit Polyclonal Antibody

#### Product data:

Product Type:	Primary Antibodies
Applications:	IHC, WB
Recommended Dilution:	Western blot: 1-2 µg/ml with the appropriate system to detect CD40L in cells and tissues. Immunohistochemistry on paraffin sections: 1-2 µg/ml to detect CD40L in formalin fixed and paraffin embedded tissues.
Reactivity:	Human, Mouse, Rat
Host:	Rabbit
Isotype:	IgG
Clonality:	Polyclonal
Immunogen:	Synthetic peptide corresponding to a sequence at the N-terminal of human CD40L
Specificity:	This antibody detects CD154 / CD40L at N-term. No cross reactivity with other proteins.
Formulation:	50% glycerol, 0.9mg NaCl, 0.2mg Na <sub>2</sub> HPO <sub>4</sub> State: Aff - Purified State: Lyophilized Ig fraction
Reconstitution Method:	0.2ml of distilled water will yield a concentration of 500µg/ml.
Purification:	Immunogen affinity purified
Conjugation:	Unconjugated
Storage:	Store undiluted at 2-8°C for one month or (in aliquots) at -20°C for longer. Avoid repeated freezing and thawing.
Stability:	Shelf life: one year from despatch.
Gene Name:	CD40 ligand
Database Link:	<a href="#">Entrez Gene 84349 Rat</a> <a href="#">Entrez Gene 959 Human</a> <a href="#">P29965</a>



[View online »](#)

**Background:**

CD40 ligand(CD40L) is a type II membrane protein of 261 amino acids on activated T cells that induces B cell proliferation and immunoglobulin secretion. It has homology with tumour necrosis factor-alpha and -beta, and has important functions in B-cell activation and differentiation. Human CD40L with 5 exons, is mapped to the proximal region of the mouse X chromosome on Xq26.3-27.1, and can be detected on T cells but is absent from B cells and monocytes. Since CD40L is expressed on platelets and released from them on activation, its predictive value as a marker for clinical outcome and the therapeutic effect of inhibition of glycoprotein IIb /IIIa receptor in patients with acute coronary syndromes was investigated. The soluble CD40L may be involved in the process of restenosis and that it exerts its effect by triggering a complex group of inflammatory reactions on endothelial and mononuclear cells. CD40L plays a central role in the pathophysiology of acute coronary syndromes, and has a role in the pathogenesis of coronary artery lesions.

**Synonyms:**

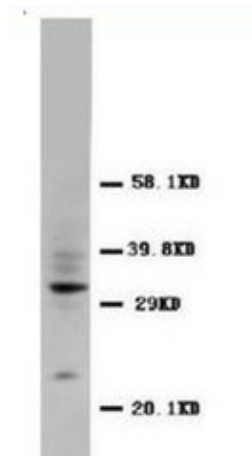
CD40 ligand, CD40-L, CD40LG, TNFSF5, TRAP, GP39

**Protein Families:**

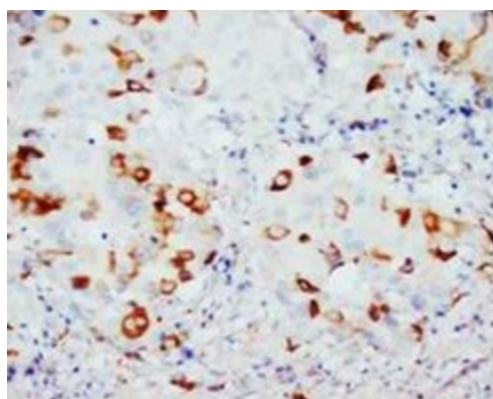
Druggable Genome, Secreted Protein, Transmembrane

**Protein Pathways:**

Allograft rejection, Asthma, Autoimmune thyroid disease, Cell adhesion molecules (CAMs), Cytokine-cytokine receptor interaction, Primary immunodeficiency, Systemic lupus erythematosus, T cell receptor signaling pathway, Viral myocarditis

**Product images:**

Western blot analysis of rat tissue sections (spleen) using CD40L antibody



Immunohistochemical analysis of paraffin embedded Mammary cancer sections staining CD40L in cytoplasm, DAB chromogenic reaction