

## Product datasheet for **AP23307PU-N**

### GJB2 Rabbit Polyclonal Antibody

#### Product data:

Product Type:	Primary Antibodies
Applications:	IF, WB
Recommended Dilution:	Western blot: At 1-2µg/ml with the appropriate system to detect Connexin 26 in cells and tissues. Immunocytochemistry.
Reactivity:	Human, Mouse, Rat
Host:	Rabbit
Isotype:	IgG
Clonality:	Polyclonal
Immunogen:	Peptide mapping at the middle region of rat Connexin 26
Specificity:	This antibody detects GJB2 / Cx26 (mid region). No cross reactivity with other proteins.
Formulation:	50% glycerol, 0.9mg NaCl, 0.2mg Na <sub>2</sub> HPO <sub>4</sub> State: Aff - Purified State: Lyophilized Ig fraction
Reconstitution Method:	1.2% sodium acetate or neutral PBS. If 0.5ml of PBS is used, the antibody concentration will be 100µg/ml.
Purification:	Immunogen affinity purified
Conjugation:	Unconjugated
Storage:	Store at 2 - 8 °C for up to one month or (in aliquots) at -20 °C for longer. Avoid repeated freezing and thawing.
Stability:	Shelf life: one year from despatch.
Gene Name:	gap junction protein beta 2
Database Link:	<a href="#">Entrez Gene 14619 Mouse</a> <a href="#">Entrez Gene 394266 Rat</a> <a href="#">Entrez Gene 2706 Human</a> <a href="#">P29033</a>



[View online »](#)

**Background:**

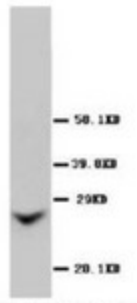
Connexin26(CX26), also known as GAP junction protein, beta2, GJB2. Gap junctions were first characterized by electron microscopy as regionally specialized structures on plasma membranes of contacting adherent cells. These structures were shown to consist of cell-to-cell channels. Proteins, called connexins, purified from fractions of enriched gap junctions from different tissues differ. The 3-prime untranslated region of the CX26 transcript contains a putative mRNA instability sequence. The deduced 226-amino acid protein has a calculated molecular mass of about 26 kD. CX26 shares 92.5% identity with rat Cx26. connexin 26 (GJB2) is assigned to human chromosome 13q11-q12. Connexin 26 regulates epidermal barrier and wound remodeling and promotes psoriasiform response. Connexin 26 gene (GJB2) mutation modulates the severity of hearing loss associated with the 1555A-G mitochondrial mutation.

**Synonyms:**

Gap junction beta-2 protein, Connexin-26

**Protein Families:**

Druggable Genome, Ion Channels: Other, Transmembrane

**Product images:**

Western blot analysis of Rat liver sections using Connexin 26 antibody