

Product datasheet for **AP23303PU-N**

C Reactive Protein (CRP) (N-term) Rabbit Polyclonal Antibody

Product data:

Product Type:	Primary Antibodies
Applications:	IHC, WB
Recommended Dilution:	Western blot: Use at 1-2 µg/ml with the appropriate system to detect CRP in cells and tissues. Immunohistochemistry on Paraffin Sections: Use at 1-2 µg/ml to detect CRP in formalin fixed and paraffin embedded tissues.
Reactivity:	Human, Mouse, Rabbit, Rat
Host:	Rabbit
Isotype:	IgG
Clonality:	Polyclonal
Immunogen:	Synthetic peptide corresponding to a sequence at the N-terminal of Human CRP
Specificity:	This antibody detects C-reactive protein (CRP) at N-term. No cross reactivity with other proteins.
Formulation:	5mg BSA, 0.9mg NaCl, 0.2mg Na ₂ HPO ₄ State: Aff - Purified State: Lyophilized purified Ig fraction Preservative: 0.05mg Thimerosal, 0.05mg Sodium Azide
Reconstitution Method:	Restore with 1.2% Sodium Acetate or neutral PBS. If 0.5ml of PBS is used, the antibody concentration will be 100 µg/ml.
Purification:	Immunogen Affinity Chromatography
Conjugation:	Unconjugated
Storage:	Store the antibody undiluted at 2-8°C for one month or (in aliquots) at -20°C for longer. Avoid repeated freezing and thawing.
Stability:	Shelf life: one year from despatch.
Gene Name:	C-reactive protein, pentraxin-related
Database Link:	Entrez Gene 12944 Mouse Entrez Gene 25419 Rat Entrez Gene 1401 Human P02741



[View online »](#)

Background:

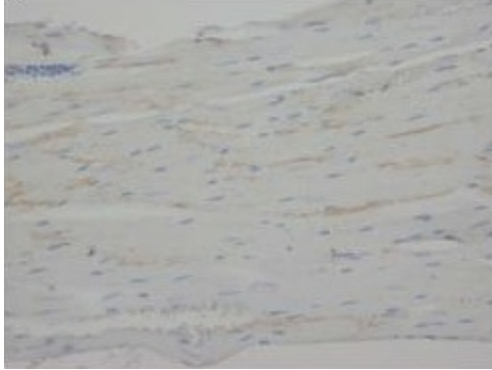
C Reactive Protein (CRP) is a major acute phase reactant synthesized primarily in the liver hepatocytes. It is composed of 5 identical, 21,500-molecular weight subunits. CRP mediates activities associated with preimmune nonspecific host resistance. CRP shows the strongest association with cardiovascular events. It is detectable on the surface of about 4% of normal peripheral blood lymphocytes. Acute phase reactant CRP is produced in the liver.

Synonyms:

PTX1, C Reactive Protein, Pentraxin-related

Protein Families:

Secreted Protein

Product images:

Immunohistochemical analysis of paraffin embedded rat tissue sections (cardiac muscle) using CRP antibody