

Product datasheet for **AP23301PU-N**

ATP5PF Rabbit Polyclonal Antibody

Product data:

| | |
|------------------------|--|
| Product Type: | Primary Antibodies |
| Applications: | IHC, WB |
| Recommended Dilution: | Western blot: At 0.5-1µg/ml with the appropriate system to detect ATP5J in cells and tissues. Immunohistochemistry on paraffin sections: At 1-2µg/ml to detect ATP5J in formalin fixed and paraffin embedded tissues. |
| Reactivity: | Human, Mouse, Rat |
| Host: | Rabbit |
| Isotype: | IgG |
| Clonality: | Polyclonal |
| Immunogen: | A synthetic peptide mapping at the middle region of human mature ATP5J (CF6) |
| Specificity: | This antibody detects ATPase subunit F6 (mid region). |
| Formulation: | 5mg BSA, 0.9mg NaCl, 0.2mg Na ₂ HPO ₄ , 0.05mg Thimerosal, 0.05mg NaN ₃ State: Aff - Purified State: Lyophilized Ig fraction |
| Reconstitution Method: | 0.2ml of distilled water will yield a concentration of 500µg/ml. |
| Purification: | Immunogen affinity purified |
| Conjugation: | Unconjugated |
| Storage: | Store at 2 - 8 °C for up to one month or (in aliquots) at -20 °C for longer. Avoid repeated freezing and thawing. |
| Stability: | Shelf life: one year from despatch. |
| Gene Name: | ATP synthase, H ⁺ transporting, mitochondrial Fo complex subunit F6 |
| Database Link: | Entrez Gene 11957 Mouse Entrez Gene 94271 Rat Entrez Gene 522 Human P18859 |



[View online »](#)

Background:

ATP synthase, H⁺ transporting, mitochondrial F₀ complex, subunit F₆ (ATP5J) is a multisubunit membrane-bound enzyme complex consisting of an F₀ segment embedded in the membrane and an F₁ segment attached to the F₀. It is also a component of mitochondrial ATP synthase which is required for the interactions of the catalytic and proton-translocating segments. Human ATP5J shares 72% sequence identity with rat ATP5J. This import signal peptide is rich in basic amino acids, devoid of acidic amino acids, and amphiphilic, which allows it to be water-soluble yet capable of passage through the phospholipid membrane bilayers. Moreover, it is circulating and functions as an endogenous vasoconstrictor by inhibiting cytosolic phospholipase A₂.

Synonyms:

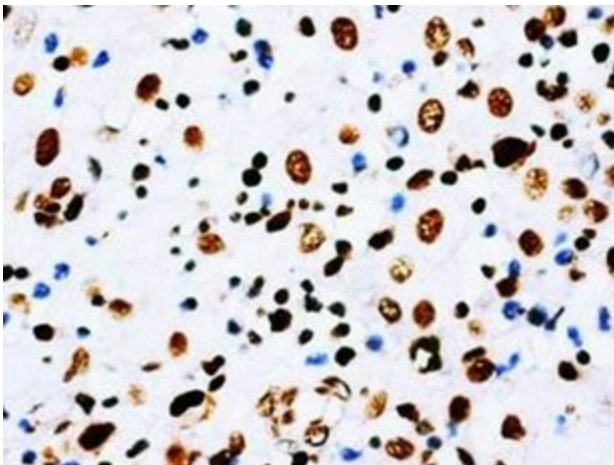
ATP5J, ATP5A, ATPM, F₁F₀ ATPase subunit F₆, Complex V subunit F₆

Protein Pathways:

Alzheimer's disease, Huntington's disease, Metabolic pathways, Oxidative phosphorylation, Parkinson's disease

Product images:

Western blot analysis of rat tissue sections (liver) lysis using ATP-5J antibody



Immunohistochemical analysis of paraffin embedded Mammary cancer sections, staining ATP-5J in cytoplasm, DAB chromogenic reaction