

## Product datasheet for **AP23288PU-N**

### BDNF Rabbit Polyclonal Antibody

#### Product data:

Product Type:	Primary Antibodies
Applications:	WB
Recommended Dilution:	<b>Western blot:</b> 1-2µg/ml with the appropriate system to detect BDNF in cells and tissues.
Reactivity:	Human, Mouse, Rat
Host:	Rabbit
Isotype:	IgG
Clonality:	Polyclonal
Immunogen:	Peptide mapping at the middle region of human BDNF
Specificity:	This antibody detects BDNF (mid region). No cross reactivity with other proteins.
Formulation:	50% glycerol, 0.9mg NaCl, 0.2mg Na <sub>2</sub> HPO <sub>4</sub> State: Aff - Purified State: Lyophilized Ig fraction
Reconstitution Method:	1.2% sodium acetate or neutral PBS. If 0.5ml of PBS is used, the antibody concentration will be 0.1 mg/ml.
Purification:	Immunogen affinity purified
Conjugation:	Unconjugated
Storage:	Store at 2 - 8 °C for up to one month or (in aliquots) at -20 °C for longer. Avoid repeated freezing and thawing.
Stability:	Shelf life: one year from despatch.
Gene Name:	brain-derived neurotrophic factor
Database Link:	<a href="#">Entrez Gene 12064 Mouse</a> <a href="#">Entrez Gene 24225 Rat</a> <a href="#">Entrez Gene 627 Human P23560</a>
Background:	Brain derived neurotrophic factor (BDNF) is a member of the neurotrophin family of growth factors that includes NGF, NT3, and NT4. BDNF is a prosurvival factor induced by cortical neurons that is necessary for survival of striatal neurons in the brain. BDNF is expressed within peripheral ganglia and is not restricted to neuronal target fields. BDNF has been purified and shown to reduce the amount of naturally occurring neuronal cell death in portions of the peripheral nervous system.



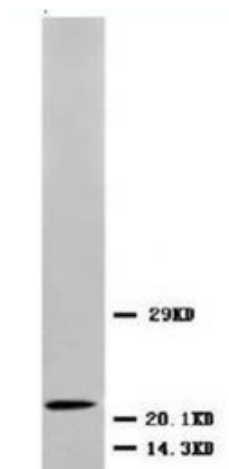
[View online »](#)

**Synonyms:** Brain-derived neurotrophic factor, Abrineurin

**Protein Families:** Adult stem cells, Druggable Genome, Embryonic stem cells, ES Cell Differentiation/IPS, Induced pluripotent stem cells, Secreted Protein, Transmembrane

**Protein Pathways:** Huntington's disease, MAPK signaling pathway, Neurotrophin signaling pathway

**Product images:**



Western blot analysis of brain tissue lysate using BDNF antibody