

## Product datasheet for **AP23284PU-N**

### NGF Rabbit Polyclonal Antibody

#### Product data:

Product Type:	Primary Antibodies
Applications:	IHC, WB
Recommended Dilution:	<b>Western blot:</b> At 1.0 µg/ml with the appropriate system to detect NGF beta in cells and tissues. <b>Immunohistochemistry on paraffin sections:</b> At 2.0 µg/ml to detect NGF beta in formalin fixed and paraffin embedded tissues.
Reactivity:	Human, Mouse, Rat
Host:	Rabbit
Isotype:	IgG
Clonality:	Polyclonal
Immunogen:	Peptide mapping human NGF beta
Specificity:	This antibody detects NGF at N-term. No cross reactivity with other proteins.
Formulation:	5mg BSA, 0.9mg NaCl, 0.2mg Na <sub>2</sub> HPO <sub>4</sub> , 0.05mg Thimerosal, 0.05mg Na <sub>3</sub> State: Aff - Purified State: Lyophilized Ig fraction
Reconstitution Method:	0.2ml of distilled water will yield a concentration of 500µg/ml.
Purification:	Immunogen affinity purified
Conjugation:	Unconjugated
Storage:	Store lyophilized at 2-8°C for 6 months or at -20°C long term. After reconstitution store the antibody undiluted at 2-8°C for one month or (in aliquots) at -20°C long term. Avoid repeated freezing and thawing.
Stability:	Shelf life: one year from despatch.
Gene Name:	nerve growth factor
Database Link:	<a href="#">Entrez Gene 18049 Mouse</a> <a href="#">Entrez Gene 310738 Rat</a> <a href="#">Entrez Gene 4803 Human P01138</a>



[View online »](#)

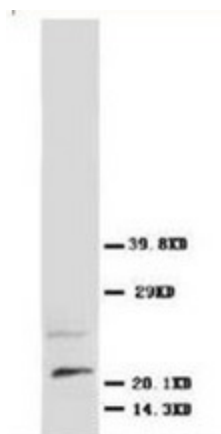
**Background:** Nerve growth factor is a polypeptide involved in the regulation of growth and differentiation of sympathetic and certain sensory neurons. The nucleotide sequence of human and mouse beta-NGF are very similar. The beta-subunits of nerve growth factor (NGFB) have been assigned to mouse chromosome 3 and human chromosome 1p22. The human gene for the beta subunit of nerve growth factor is located on the proximal short arm of chromosome 1. A mutation in the nerve growth factor beta gene (NGFB) causes loss of pain perception.

**Synonyms:** Beta-NGF, NGFB, Beta-nerve growth factor

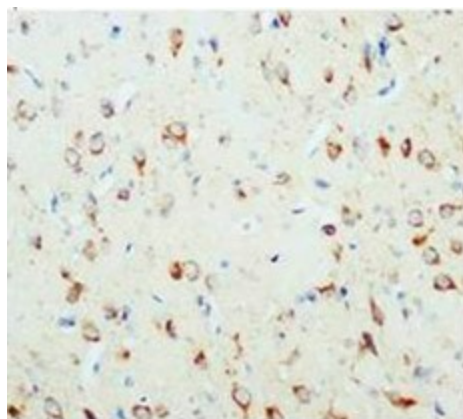
**Protein Families:** Druggable Genome, Secreted Protein

**Protein Pathways:** Apoptosis, MAPK signaling pathway, Neurotrophin signaling pathway

### Product images:



Western blot analysis of rat brain tissue lysis using NGFbeta antibody



Immunohistochemical analysis of paraffin embedded rat tissue sections (brain), staining NGFbeta in cytoplasm, DAB chromogenic reaction