

Product datasheet for **AP23283PU-N**

CCR7 (C-term) Rabbit Polyclonal Antibody

Product data:

Product Type:	Primary Antibodies
Applications:	IHC, WB
Recommended Dilution:	Western blot: At 1-2µg/ml with the appropriate system to detect CCR7 in cells and tissues. Immunohistochemistry on paraffin sections: At 1-2µg/ml to detect CCR7 in formalin fixed and paraffin embedded tissues. Boiling the sections is required.
Reactivity:	Human, Mouse, Rat
Host:	Rabbit
Isotype:	IgG
Clonality:	Polyclonal
Immunogen:	A synthetic peptide corresponding to a sequence mapping at the C-terminal of human CCR7
Specificity:	This antibody detects CD197 / CCR7 at C-term. No cross reactivity with other proteins.
Formulation:	5mg BSA, 0.9mg NaCl, 0.2mg Na ₂ HPO ₄ , 0.05mg Thimerosal, 0.05mg NaN ₃ State: Aff - Purified State: Lyophilized Ig fraction
Reconstitution Method:	0.2ml of distilled water will yield a concentration of 500µg/ml.
Purification:	Immunogen affinity purified
Conjugation:	Unconjugated
Storage:	Store at 2 - 8 °C for up to one month or (in aliquots) at -20 °C for longer. Avoid repeated freezing and thawing.
Stability:	Shelf life: one year from despatch.
Gene Name:	C-C motif chemokine receptor 7
Database Link:	Entrez Gene 12775 Mouse Entrez Gene 287673 Rat Entrez Gene 1236 Human P32248



[View online »](#)

Background:

Schweickart et al. identified CCR7 (also known as EBI1) in 1994, which is a lymphoid-specific member of the G protein-coupled receptor family. This gene, which is encoded on human chromosome 17q12-q21.2, is expressed in normal lymphoid tissues and in several B- and T-lymphocyte cell lines with 86% identity to the mouse homolog. It is also related to the receptors that recognize chemoattractants, such as interleukin-8, RANTES, C5a, and fMet-Leu-Phe. Expression of CCR7 controls homing to secondary lymphoid organs, divides human memory T cells into two functionally distinct subsets.

Synonyms:

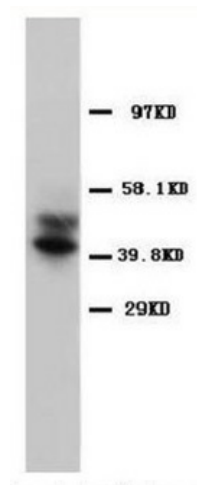
C-C chemokine receptor type 7, C-C CKR-7, CC-CKR-7, CCR-7, CMKBR7, EBI1, EVI1, BLR2

Protein Families:

Druggable Genome, GPCR, Transmembrane

Protein Pathways:

Chemokine signaling pathway, Cytokine-cytokine receptor interaction

Product images:

Western blot analysis of spleen sections using CCR7 antibody