

Product datasheet for **AP23281PU-N**

Apoptosis inhibitor 5 (API5) (C-term) Rabbit Polyclonal Antibody

Product data:

Product Type:	Primary Antibodies
Applications:	IHC, WB
Recommended Dilution:	Western blot: At 1-2µg/ml with the appropriate system to detect API5 in cells and tissues. Immunohistochemistry on paraffin sections: At 0.5-1µg/ml to detect API5 in formalin fixed and paraffin embedded tissues. Boiling the sections is required.
Reactivity:	Human, Mouse, Rat
Host:	Rabbit
Isotype:	IgG
Clonality:	Polyclonal
Immunogen:	Synthetic peptide corresponding to a sequence at the C-terminal of human API5
Specificity:	This antibody detects API5 / MIG8 at C-term.
Formulation:	5mg BSA, 0.9mg NaCl, 0.2mg Na ₂ HPO ₄ , 0.05mg Thimerosal, 0.05mg NaN ₃ State: Aff - Purified State: Lyophilized Ig fraction
Reconstitution Method:	0.2ml of distilled water will yield a concentration of 500µg/ml.
Purification:	Affinity-chromatography using epitope-specific immunogen
Conjugation:	Unconjugated
Storage:	Store at 2 - 8 °C for up to one month or (in aliquots) at -20 °C for longer. Avoid repeated freezing and thawing.
Stability:	Shelf life: one year from despatch.
Gene Name:	apoptosis inhibitor 5
Database Link:	Entrez Gene 11800 Mouse Entrez Gene 362170 Rat Entrez Gene 8539 Human Q9BZZ5
Background:	Many growth factors and cytokines act as cellular survival factors by preventing programmed cell death (apoptosis). Apoptosis inhibitor 5 (API5) is an antiapoptotic factor which may have a role in protein assembly. It is a critical determinant of E2F1-induced apoptosis, acting downstream of E2F to suppress E2F-dependent apoptosis without generally blocking E2F-dependent transcription.

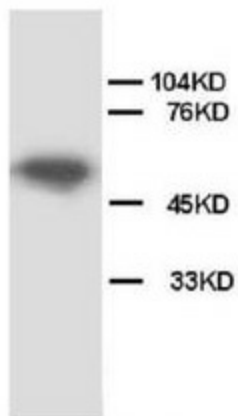


[View online »](#)

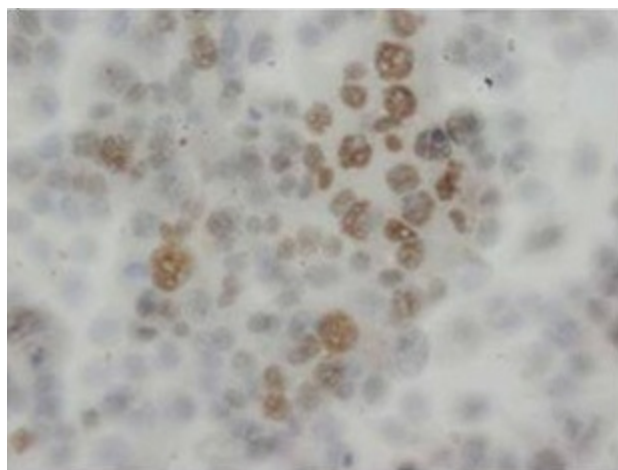
Synonyms: Protein XAGL, FIF, AAC-11

Protein Families: Druggable Genome

Product images:



Western blot analysis of rat cardiac tissue lysis using API5 antibody AP23281PU-N



Immunohistochemical analysis of paraffin embedded Human epidermic carinoma sections using API5 antibody AP23281PU-N