

Product datasheet for **AP23278PU-N**

KCNN4 (N-term) Rabbit Polyclonal Antibody

Product data:

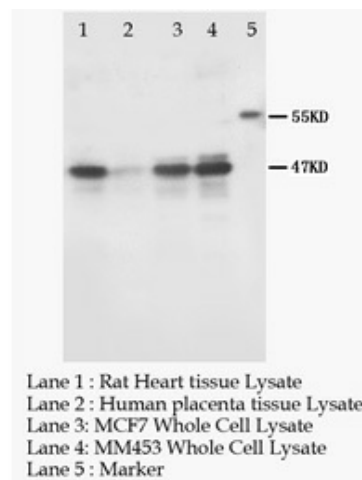
Product Type:	Primary Antibodies
Applications:	WB
Recommended Dilution:	At 0.5-1µg/ml with the appropriate system to detect KCNN4 in cells and tissues.
Reactivity:	Human, Mouse, Rat
Host:	Rabbit
Isotype:	IgG
Clonality:	Polyclonal
Immunogen:	Synthetic peptide corresponding to a sequence mapping at the C-terminal of human KCNN4
Specificity:	This antibody detects KCNN4 at N-term. No cross reactivity with other proteins.
Formulation:	5mg BSA, 0.9mg NaCl, 0.2mg Na ₂ HPO ₄ , 0.05mg Thimerosal, 0.05mg NaN ₃ State: Aff - Purified State: Lyophilized Ig fraction
Reconstitution Method:	0.2ml of distilled water will yield a concentration of 500µg/ml.
Purification:	Immunogen affinity purified
Conjugation:	Unconjugated
Storage:	Store at 2 - 8 °C for up to one month or (in aliquots) at -20 °C for longer. Avoid repeated freezing and thawing.
Stability:	Shelf life: one year from despatch.
Gene Name:	potassium calcium-activated channel subfamily N member 4
Database Link:	Entrez Gene 16534 Mouse Entrez Gene 65206 Rat Entrez Gene 3783 Human O15554
Background:	Intermediate conductance calcium-activated potassium channel protein 1 (KCNN4,Kca3.1) is part of a potentially heterotetrameric voltage-independent potassium channel that is activated by intracellular calcium. Activation is followed by membrane hyperpolarization, which promotes calcium influx. KCNN4 may be part of the predominant calcium-activated potassium channel in T-lymphocytes. This gene is similar to other KCNN family potassium channel genes, but it differs enough to possibly be considered as part of a new subfamily.
Synonyms:	KCNN4, IK1, IKCA1, KCA4, SK4, KCa3.1, Putative Gardos channel



[View online »](#)

Protein Families: Druggable Genome, Ion Channels: Potassium, Transmembrane

Product images:



KCNN4 (KCA3.1) Polyclonal Antibody