

Product datasheet for **AP23275PU-N**

Myelin Basic Protein (MBP) (C-term) Rabbit Polyclonal Antibody

Product data:

Product Type:	Primary Antibodies
Applications:	IF, IHC, IP, WB
Recommended Dilution:	Western blot: At 1-2µg/ml with the appropriate system to detect MBP in cells and tissues. Immunohistochemistry on paraffin sections: At 1-2µg/ml to detect MBP in formalin fixed and paraffin embedded tissues. Boiling the sections is required. Immunocytochemistry. Immunoprecipitation.
Reactivity:	Human, Mouse, Rat
Host:	Rabbit
Isotype:	IgG
Clonality:	Polyclonal
Immunogen:	Synthetic peptide corresponding to a sequence at the C-terminal of the human MBP
Specificity:	This antibody detects Myelin Basic Protein at C-term. No cross reactivity with other proteins.
Formulation:	50% glycerol, 0.9mg NaCl, 0.2mg Na ₂ HPO ₄ State: Aff - Purified State: Lyophilized Ig fraction
Reconstitution Method:	1.2% sodium acetate or neutral PBS.
Purification:	Immunogen affinity purified
Conjugation:	Unconjugated
Storage:	Store at 2 - 8 °C for up to one month or (in aliquots) at -20 °C for longer. Avoid repeated freezing and thawing.
Stability:	Shelf life: one year from despatch.
Gene Name:	myelin basic protein
Database Link:	Entrez Gene 17196 Mouse Entrez Gene 24547 Rat Entrez Gene 4155 Human P02686



[View online »](#)

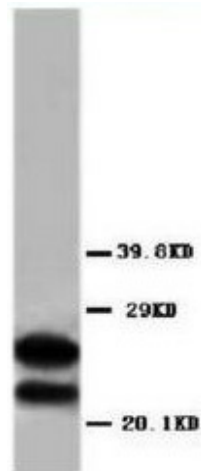
Background:

Myelin basic protein (MBP) is a major constituent of the myelin sheath of oligodendrocytes and Schwann cells in the central nervous system and the peripheral nervous system, respectively. It is most abundant in hemopoietic system and contains seven exons distributed over 32-34 kb. MBP isolated from MS brain may differ in charge microheterogeneity which would affect antigenic determinants. MBP is mapped to chromosome 18q22-23. Failure in this gene expression would be correlated in the central white matter with extrapyramidal system degeneration signs. Moreover, it is a candidate autoantigen in the disease multiple sclerosis.

Synonyms:

MBP

Product images:



Western blot analysis of rat brain tissue lysis using MBP antibody



Immunohistochemical analysis of paraffin embedded Human tissue sections (liver) using MBP antibody