

Product datasheet for **AP23273PU-N**

INSL3 (N-term) Rabbit Polyclonal Antibody

Product data:

Product Type:	Primary Antibodies
Applications:	IF, IHC, IP, WB
Recommended Dilution:	Western blot: At 1-2µg/ml with the appropriate system to detect INSL3 in cells and tissues. Immunohistochemistry on paraffin sections: At 1-2µg/ml to detect INSL3 in formalin fixed and paraffin embedded tissues. Immunoprecipitation.
Reactivity:	Human, Mouse, Rat
Host:	Rabbit
Isotype:	IgG
Clonality:	Polyclonal
Immunogen:	Synthetic peptide corresponding to a sequence near the N-terminal of human INSL3
Specificity:	This antibody detects INSL3 / RLF (N-term).
Formulation:	5mg BSA, 0.9mg NaCl, 0.2mg Na ₂ HPO ₄ , 0.05mg Thimerosal, 0.05mg Na ₃ State: Aff - Purified State: Lyophilized Ig fraction
Reconstitution Method:	0.2ml of distilled water will yield a concentration of 500µg/ml.
Purification:	Immunogen affinity purified
Conjugation:	Unconjugated
Storage:	Store at 2 - 8 °C for up to one month or (in aliquots) at -20 °C for longer. Avoid repeated freezing and thawing.
Stability:	Shelf life: one year from despatch.
Gene Name:	insulin like 3
Database Link:	Entrez Gene 3640 Human P51460



[View online »](#)

Background:

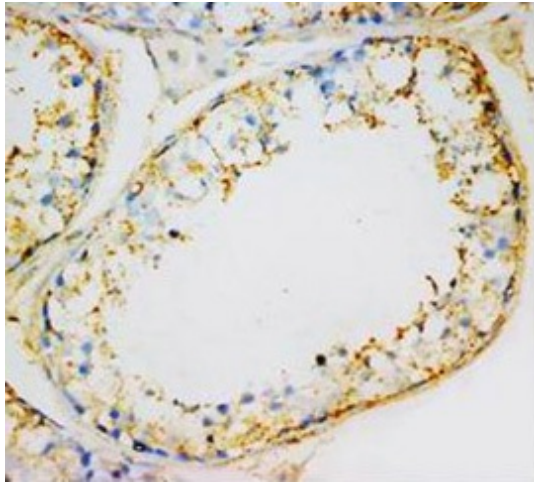
Insulin-like 3 (INSL3), a member of the insulin-like hormone superfamily, is specifically expressed in Leydig cells of the fetal and postnatal testis and in theca cells of the postnatal ovary. It is synthesized as a 131-amino acid preproprotein, which contains a 24-amino acid signal peptide. The human INSL3 gene is assigned to bands p13.2-p12 of the short arm of chromosome 19 with the similar organization to that of insulin and relaxin. INSL3 induces gubernaculum development in an androgen-independent way, while androgen-mediated regression of the CSL occurs independently from Insl3. Moreover, INSL3 is a ligand for LGR8 and INSL3-LGR8 mutations are believed to be associated with human cryptorchidism.

Synonyms:

RLNL, Insulin-like 3, Leydig insulin-like peptide, Relaxin-like factor

Protein Families:

Druggable Genome, Secreted Protein

Product images:

Immunohistochemical analysis of paraffin embedded Human testicle sections, staining INSL3 in cytoplasm DAB chromogenic reaction