

Product datasheet for **AP23265PU-N**

MIF (C-term) Rabbit Polyclonal Antibody

Product data:

Product Type:	Primary Antibodies
Applications:	IHC, WB
Recommended Dilution:	Western blot: At 1-2µg/ml with the appropriate system to detect MIF in cells and tissues. Immunohistochemistry on paraffin sections: At 1-2µg/ml to detect MIF in formalin fixed and paraffin embedded tissues.
Reactivity:	Human, Mouse, Rat
Host:	Rabbit
Isotype:	IgG
Clonality:	Polyclonal
Immunogen:	Synthetic peptide corresponding to a sequence at the C-terminal of human MIF
Specificity:	This antibody detects MIF at C-term. No cross reactivity with other proteins.
Formulation:	5mg BSA, 0.9mg NaCl, 0.2mg Na ₂ HPO ₄ , 0.05mg Thimerosal, 0.05mg NaN ₃ State: Aff - Purified State: Lyophilized Ig fraction
Reconstitution Method:	0.2ml of distilled water will yield a concentration of 500µg/ml.
Purification:	Immunogen affinity purified
Conjugation:	Unconjugated
Storage:	Store at 2 - 8 °C for up to one month or (in aliquots) at -20 °C for longer. Avoid repeated freezing and thawing.
Stability:	Shelf life: one year from despatch.
Gene Name:	macrophage migration inhibitory factor (glycosylation-inhibiting factor)
Database Link:	Entrez Gene 17319 Mouse Entrez Gene 81683 Rat Entrez Gene 4282 Human P14174



[View online »](#)

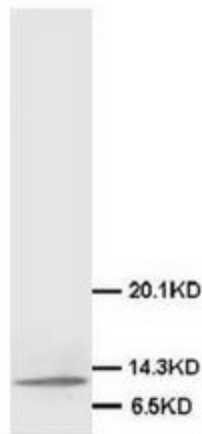
Background: Macrophage migration inhibitory factor, MIF, is a cytokine released by T-lymphocytes, macrophages, and the pituitary gland that serves to integrate peripheral and central inflammatory responses. MIF gene has 3 exons separated by introns of only 189 and 95 bp, and covers less than 1 kb. Localization of the human gene for macrophage migration inhibitory factor (MIF) to chromosome 22q11.2 MIF plays a critical role in inflammatory diseases and atherogenesis.

Synonyms: Macrophage migration inhibitory factor, Phenylpyruvate tautomerase, Glycosylation-inhibiting factor, GLIF, MMIF

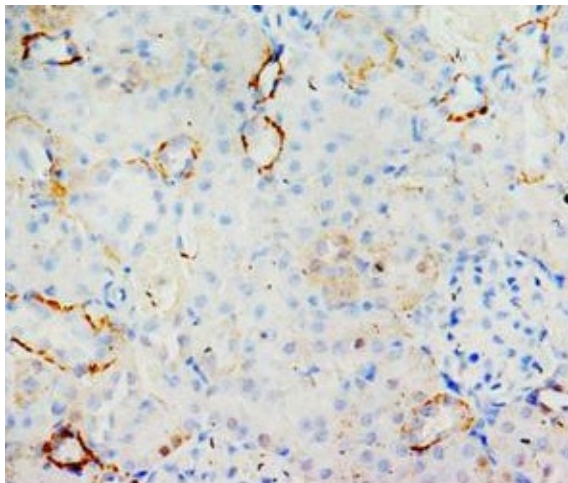
Protein Families: Druggable Genome

Protein Pathways: Phenylalanine metabolism, Tyrosine metabolism

Product images:



Western blot analysis of Mammary cancer tissue lysis using MIF antibody



Immunohistochemical analysis of paraffin embedded rat kidney sections, staining MIF in cytoplasm, DAB chromogenic reaction