

## Product datasheet for **AP23263PU-N**

### FGF2 Rabbit Polyclonal Antibody

#### Product data:

Product Type:	Primary Antibodies
Applications:	IHC, WB
Recommended Dilution:	<b>Western blot:</b> 1-2 µg/ml. <b>Immunohistochemistry on Paraffin Sections:</b> 1-2 µg/ml (Boiling the sections is required).
Reactivity:	Human, Mouse, Rat
Host:	Rabbit
Isotype:	IgG
Clonality:	Polyclonal
Immunogen:	A peptide mapping near the N-terminal of Human FGF2, identical to the related Rat and Mouse sequence
Specificity:	Recognizes Fibroblast Growth Factor 2, FGF2
Formulation:	5mg BSA, 0.9mg NaCl, 0.2mg Na <sub>2</sub> HPO <sub>4</sub> , 0.05mg Thimerosal and 0.05mg Sodium Azide State: Aff - Purified State: Lyophilized purified IgG fraction
Reconstitution Method:	Restore with 0.2 ml of distilled water to yield a concentration of 0.5 mg/ml.
Concentration:	0.5 mg/ml (after reconstitution)
Purification:	Immunoaffinity Chromatography
Conjugation:	Unconjugated
Storage:	Store the antibody after reconstitution at 2-8°C for one month or (in aliquots) at -20°C for longer. Avoid repeated freezing and thawing.
Stability:	Shelf life: one year from despatch.
Gene Name:	fibroblast growth factor 2
Database Link:	<a href="#">Entrez Gene 14173 Mouse</a> <a href="#">Entrez Gene 54250 Rat</a> <a href="#">Entrez Gene 2247 Human P09038</a>



[View online »](#)

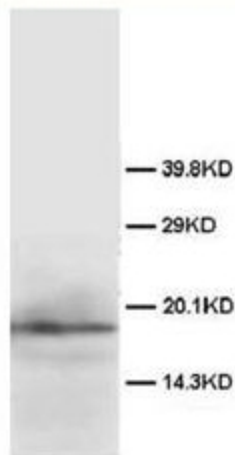
**Background:** FGF2 has been implicated in a multitude of physiologic and pathologic processes, including limb development, angiogenesis, wound healing, and tumor growth. FGF2 belongs to the fibroblast growth factor (FGF) family. Fibroblast growth factors (FGFs) exhibit widespread mitogenic and neurotrophic activities. Nine members of the family are currently known, and FGF-1 and FGF-2 are present in relatively high levels in CNS. FGF-2 is expressed by at low levels in many tissues and cell types and reaches high concentrations in brain and pituitary.

**Synonyms:** FGFB, Heparin-binding growth factor 2, Fibroblast growth factor 2 (basic), BFGF, HBGF-2, HBGF2

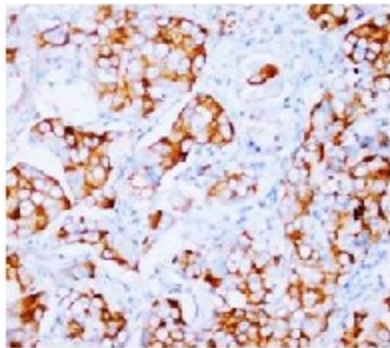
**Protein Families:** Druggable Genome, Secreted Protein

**Protein Pathways:** MAPK signaling pathway, Melanoma, Pathways in cancer, Regulation of actin cytoskeleton

### Product images:



Western blot of Rat brain tissue lysis using FGF2 antibody



Immunohistochemical analysis of Paraffin Embedded Mammary cancer sections using FGF2 antibody. Staining FGF2 in Cytoplasm. DAB chromogenic reaction.