

## Product datasheet for **AP23259PU-N**

### Integrin alpha 4 (ITGA4) (C-term) Rabbit Polyclonal Antibody

#### Product data:

Product Type:	Primary Antibodies
Applications:	IF, IHC, IP, WB
Recommended Dilution:	Western blot: At 1-2µg/ml with the appropriate system to detect ITGA4 in cells and tissues. Immunohistochemistry on paraffin sections: At 1-2µg/ml to detect ITGA4 in formalin fixed and paraffin embedded tissues. Boiling the sections is required. Immunocytochemistry: At 2-4µg/ml to detect ITGA4 in acetone fixed cell. Antigen retrieval by Pepsin and Trypsin is required. Immunoprecipitation.
Reactivity:	Human, Mouse, Rat
Host:	Rabbit
Isotype:	IgG
Clonality:	Polyclonal
Immunogen:	Synthetic peptide corresponding to the C-terminal of human ITGA4
Specificity:	This antibody detects CD49d / ITGA4 at C-term.
Formulation:	50% glycerol, 0.9mg NaCl, 0.2mg Na <sub>2</sub> HPO <sub>4</sub> State: Aff - Purified State: Lyophilized Ig fraction
Reconstitution Method:	1.2% sodium acetate or neutral PBS. If 0.5ml of PBS is used, the antibody concentration will be 100µg/ml.
Purification:	Immunogen affinity purified
Conjugation:	Unconjugated
Storage:	Store at 2 - 8 °C for up to one month or (in aliquots) at -20 °C for longer. Avoid repeated freezing and thawing.
Stability:	Shelf life: one year from despatch.
Gene Name:	integrin subunit alpha 4
Database Link:	<a href="#">Entrez Gene 16401 Mouse</a> <a href="#">Entrez Gene 311144 Rat</a> <a href="#">Entrez Gene 3676 Human</a> <a href="#">P13612</a>



[View online »](#)

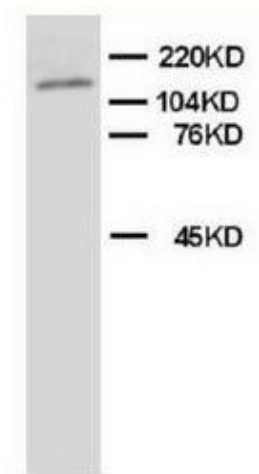
**Background:** The integrin family includes cell surface receptors for extracellular matrix components as well as receptors involved in various aspects of leukocyte adhesion. Integrin alpha chain 4 (ITGA4) is assigned to 2q31-q32. Interaction between leukemic-cell VLA-4 and stromal fibronectin is a decisive factor for minimal residual disease of acute myelogenous leukemia.

**Synonyms:** Integrin alpha-4, Integrin alpha-IV, VLA-4, VLA4

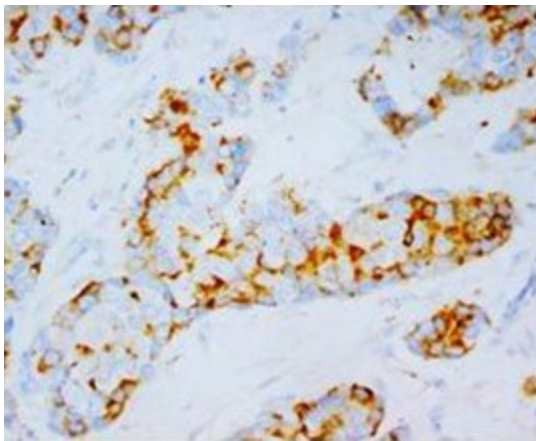
**Protein Families:** Druggable Genome, ES Cell Differentiation/IPS, Transmembrane

**Protein Pathways:** Arrhythmogenic right ventricular cardiomyopathy (ARVC), Cell adhesion molecules (CAMs), Dilated cardiomyopathy, ECM-receptor interaction, Focal adhesion, Hematopoietic cell lineage, Hypertrophic cardiomyopathy (HCM), Leukocyte transendothelial migration, Regulation of actin cytoskeleton

**Product images:**



Western blot analysis of rat brain tissue lysis using ITGA4 antibody



Immunohistochemical analysis of paraffin embedded Mammary cancer sections, staining ITGA4 in cytoplasm, DAB chromogenic reaction