

## Product datasheet for **AP23257PU-N**

### SSX2 (C-term) Rabbit Polyclonal Antibody

#### Product data:

Product Type:	Primary Antibodies
Applications:	WB
Recommended Dilution:	Western blot: 1 µg/ml.
Reactivity:	Human, Mouse, Rat
Host:	Rabbit
Isotype:	IgG
Clonality:	Polyclonal
Immunogen:	Synthetic peptide corresponding to a sequence at the C-terminal of human SSX2
Specificity:	This antibody detects SSX2 at C-term. No cross reactivity with other proteins.
Formulation:	5mg BSA, 0.9mg NaCl, 0.2mg Na <sub>2</sub> HPO <sub>4</sub> , 0.05mg himerosal, 0.05mg NaN <sub>3</sub> State: Aff - Purified State: Lyophilized Ig fraction
Reconstitution Method:	0.2ml of distilled water will yield a concentration of 500 µg/ml.
Purification:	Immunogen affinity purified
Conjugation:	Unconjugated
Storage:	Store at 2 - 8 °C for up to one month or (in aliquots) at -20 °C for longer. Avoid repeated freezing and thawing.
Stability:	Shelf life: one year from despatch.
Gene Name:	SSX family member 2
Database Link:	<a href="#">Entrez Gene 6757 Human Q16385</a>
Background:	Synovial sarcoma, X breakpoint 2, also known as SSX2, is a human gene. The product of this gene belongs to the family of highly homologous synovial sarcoma X (SSX) breakpoint proteins. SSX1, SSX2 and SSX4 genes have been involved in the t(X;18) translocation characteristically found in all synovial sarcomas. The SSX1 and SSX2 genes encode closely related proteins (81% identity) of 188 amino acids that are rich in charged amino acids. The N-terminal portion of each SSX protein exhibits homology to the Kruppel-associated box (KRAB), a transcriptional repressor domain previously found only in Kruppel-type zinc finger proteins.

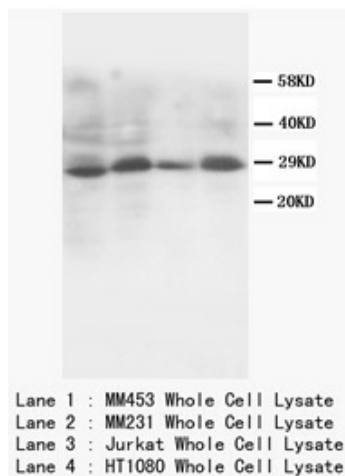


[View online »](#)

**Synonyms:** Synovial sarcoma X breakpoint 2, SSX2A, SSX2B, HOM-MEL-40, CT5.2

**Protein Families:** Druggable Genome, Transcription Factors

**Product images:**



SSX2 Polyclonal Antibody