

Product datasheet for **AP23240PU-N**

pan Actin (367-377) Rabbit Polyclonal Antibody

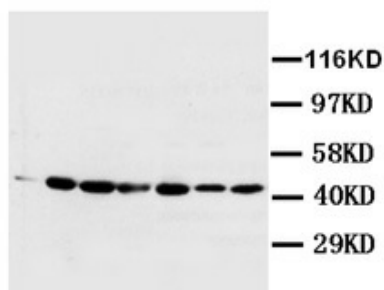
Product data:

Product Type:	Primary Antibodies
Applications:	IHC, WB
Recommended Dilution:	Western blot: 1 µg/ml Immunohistochemistry on paraffin sections: 2 µg/ml.
Reactivity:	Human, Rat
Host:	Rabbit
Isotype:	IgG
Clonality:	Polyclonal
Immunogen:	Synthetic peptide corresponding to a sequence at the C-terminal of human Actin (367-377aa)
Specificity:	This antibody detects Actin (pan) at aa 367-377. No cross reactivity with other proteins.
Formulation:	5mg BSA, 0.9mg NaCl, 0.2mg Na ₂ HPO ₄ , 0.05mg Thimerosal, 0.05mg Na ₃ State: Aff - Purified State: Lyophilized Ig fraction
Reconstitution Method:	0.2ml of distilled water will yield a concentration of 500µg/ml.
Purification:	Immunogen affinity purified
Conjugation:	Unconjugated
Storage:	Store at 2 - 8 °C for up to one month or (in aliquots) at -20 °C for longer. Avoid repeated freezing and thawing.
Stability:	Shelf life: one year from despatch.
Background:	Actin, a highly conserved protein, is a major component of both the cytoskeletal and contractile structures in the cell types. It varies in amount, being related to the type of differentiation and to the functional state of cells and tissues. The actins exhibit over 90% sequence homology, but each isoform has a unique NH ₂ -terminal sequence. The isoforms are comprised of three alpha-actin, one beta-actin, two gamma-actin. Because the amino acid sequence of the C-terminal is the same for almost all actins, this antibody has been raised using a synthetic peptide corresponding to the C-terminal 11 residues.



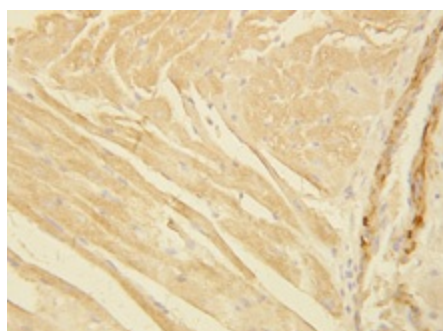
[View online »](#)

Product images:



Lane 1 : Rat Testicular tissue Lysate
 Lane 2 : Rat Ovarian tissue Lysate
 Lane 3 : Rat brain tissue Lysate
 Lane 4 : Rat Heart tissue Lysate
 Lane 5 : HeLa Whole Cell Lysate
 Lane 6 : Jurkat Whole Cell Lysate
 Lane 7 : SMMC Whole Cell Lysate

Actin Polyclonal Antibody



Actin Polyclonal Antibody