

## Product datasheet for **AP23211PU-N**

### GRB2 (C-term) Rabbit Polyclonal Antibody

#### Product data:

Product Type:	Primary Antibodies
Applications:	IHC, WB
Recommended Dilution:	<b>Immunohistochemistry on Paraffin Sections:</b> 10 µg/ml. <b>Western Blot:</b> 1 µg/ml.
Reactivity:	Bovine, Human, Mouse, Rat
Host:	Rabbit
Clonality:	Polyclonal
Immunogen:	GRB2 antibody was raised against synthetic peptide corresponding to C-terminus of human Grb2 (amino acids 198-217).
Specificity:	The polyclonal antibody recognizes Grb2, a highly conserved approximately 26 kD adaptor protein.
Formulation:	PBS containing 15 mM sodium azide and 0.2% BSA State: Aff - Purified State: Liquid purified Ig fraction
Concentration:	lot specific
Purification:	Immunoaffinity Chromatography
Conjugation:	Unconjugated
Storage:	Store undiluted at 2-8°C for one month or (in aliquots) at -20°C for longer. Avoid repeated freezing and thawing.
Stability:	Shelf life: one year from despatch.
Gene Name:	growth factor receptor bound protein 2
Database Link:	<a href="#">Entrez Gene 14784 Mouse</a> <a href="#">Entrez Gene 81504 Rat</a> <a href="#">Entrez Gene 2885 Human P62993</a>



[View online »](#)

**Background:**

Growth factor receptor bound protein 2 (GRB2), also known as Ash protein, is a 24 kDa protein that contains a central Src homology (SH2) domain flanked by two SH3 domains. GRB2 is believed to be a regulatory subunit of signaling molecules whose activity is modulated by receptor binding. GRB2 associates with activated (tyrosine phosphorylated) EGFR and PDGFR via its SH2 domain as well as IRS1, SHC, and LNK through SH2 and SH3 domains. The SH3 domain binds to SOS, a guanine nucleotide exchange factor for Ras proteins. Endocytosis of activated EGFR requires the interaction of GRB2 with the GTP binding protein dynamin, a factor essential to the formation of endocytotic vesicle. It is ubiquitously expressed and several isoforms are produced by alternative splicing. On SDS PAGE, GRB2 has an apparent molecular weight of 28 kDa.

**Synonyms:**

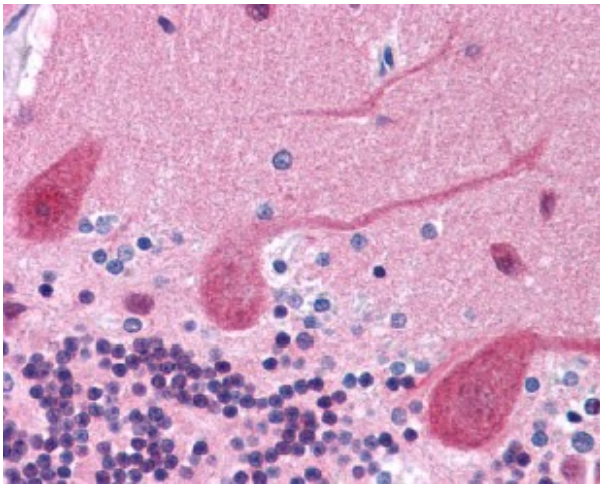
Growth factor receptor-bound protein 2

**Protein Families:**

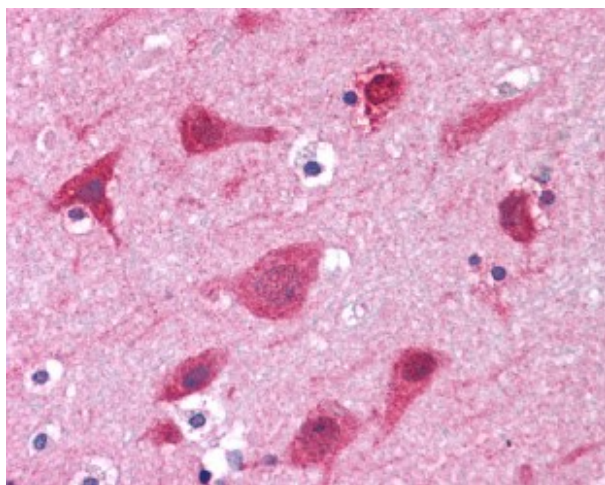
Druggable Genome

**Protein Pathways:**

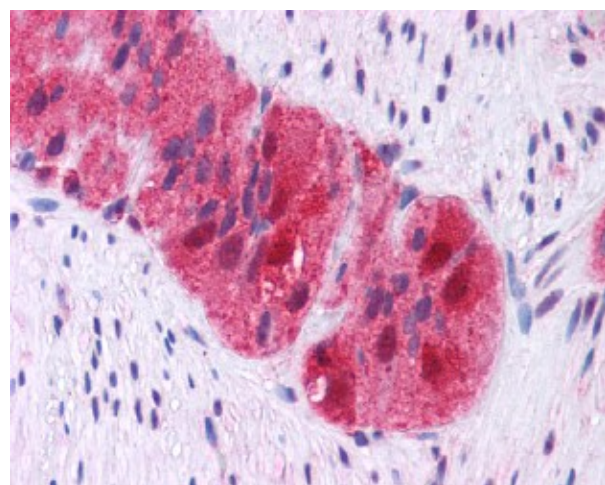
Acute myeloid leukemia, B cell receptor signaling pathway, Chemokine signaling pathway, Chronic myeloid leukemia, Colorectal cancer, Dorso-ventral axis formation, Endometrial cancer, ErbB signaling pathway, Fc epsilon RI signaling pathway, Focal adhesion, Gap junction, Glioma, GnRH signaling pathway, Insulin signaling pathway, Jak-STAT signaling pathway, MAPK signaling pathway, Natural killer cell mediated cytotoxicity, Neurotrophin signaling pathway, Non-small cell lung cancer, Pathways in cancer, Prostate cancer, Renal cell carcinoma, T cell receptor signaling pathway

**Product images:**

IHC Image for Human Brain, Cerebellum:  
Formalin-Fixed, Paraffin-Embedded (FFPE)



IHC Image for Human Brain, Cortex: Formalin-Fixed, Paraffin-Embedded (FFPE)



IHC Image for Human Colon, Myenteric Plexus: Formalin-Fixed, Paraffin-Embedded (FFPE)