

Product datasheet for **AP23202PU-N**

VASP Rabbit Polyclonal Antibody

Product data:

Product Type:	Primary Antibodies
Applications:	IHC, WB
Recommended Dilution:	Immunohistochemistry on Paraffin Sections: 20 µg/ml. Western Blot: 1/500 - 1/1000.
Reactivity:	Human, Canine, Equine, Monkey, Mouse, Rat
Host:	Rabbit
Clonality:	Polyclonal
Immunogen:	Synthesized non-phosphopeptide derived from human VASP around the phosphorylation site of serine 157
Specificity:	This antibody detects endogenous levels of total VASP protein.
Formulation:	PBS (without Mg ²⁺ , Ca ²⁺), pH 7.4, 150 mM sodium chloride, 0.02% sodium azide, 50% glycerol State: Aff - Purified State: Liquid Ig fraction
Purification:	Immunoaffinity Chromatography
Conjugation:	Unconjugated
Storage:	Store (in aliquots) at -20 °C. Avoid repeated freezing and thawing.
Stability:	Shelf life: one year from despatch.
Gene Name:	vasodilator-stimulated phosphoprotein
Database Link:	Entrez Gene 22323 Mouse Entrez Gene 361517 Rat Entrez Gene 7408 Human P50552



[View online »](#)

Background:

Vasodilator-stimulated phosphoprotein (VASP) is a member of the Ena-VASP protein family. Ena-VASP family members contain an EHV1 N-terminal domain that binds proteins containing E/DFPPPPXD/E motifs and targets Ena-VASP proteins to focal adhesions. In the mid-region of the protein, family members have a proline-rich domain that binds SH3 and WW domain-containing proteins. Their C-terminal EVH2 domain mediates tetramerization and binds both G and F actin. VASP is associated with filamentous actin formation and likely plays a widespread role in cell adhesion and motility. VASP may also be involved in the intracellular signaling pathways that regulate integrin-extracellular matrix interactions. VASP is regulated by the cyclic nucleotide-dependent kinases PKA and PKG.

Synonyms:

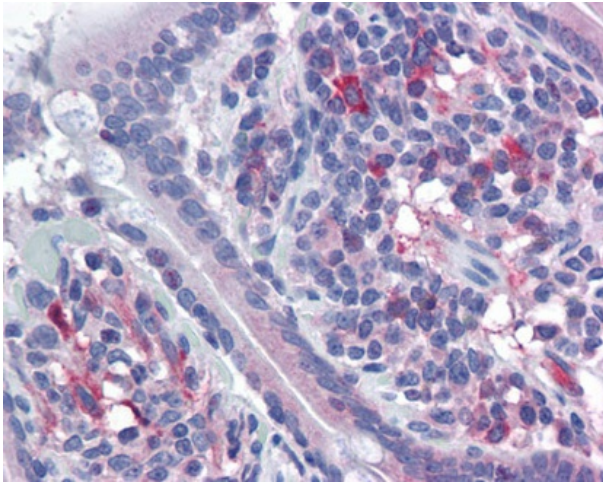
Vasodilator-stimulated phosphoprotein

Protein Families:

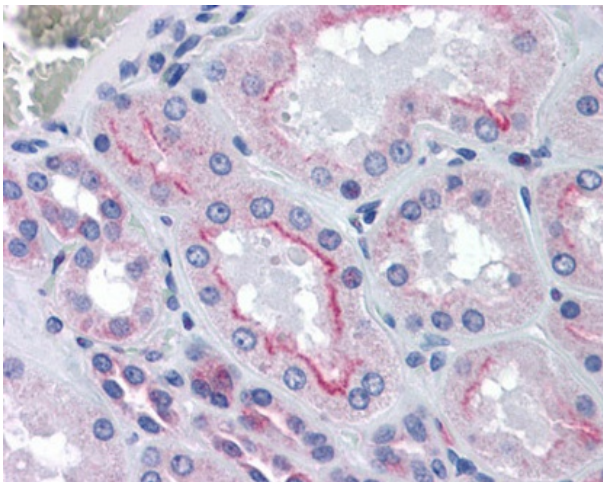
Druggable Genome, Stem cell - Pluripotency

Protein Pathways:

Fc gamma R-mediated phagocytosis, Focal adhesion, Leukocyte transendothelial migration

Product images:

Human Small Intestine: Formalin-Fixed, Paraffin-Embedded (FFPE)



Human Kidney: Formalin-Fixed, Paraffin-Embedded (FFPE)