

## Product datasheet for **AP23184PU-N**

### Neutrophil Elastase (ELANE) Sheep Polyclonal Antibody

#### Product data:

Product Type:	Primary Antibodies
Applications:	ELISA, Ie, IHC
Recommended Dilution:	ELISA IE IHC-P (5 µg/ml)
Reactivity:	Human
Host:	Sheep
Isotype:	IgG
Clonality:	Polyclonal
Immunogen:	Neutrophil elastase (active-site blocked) prepared from human sputum.
Specificity:	Specific for elastase.
Formulation:	10 mM HEPES, pH 7.4, 0.15 M NaCl, 50% Glycerol
Concentration:	lot specific
Purification:	Ion exchange chromatography
Conjugation:	Unconjugated
Storage:	Short term: store at 4°C. Long term: aliquot and store at -20°C. Avoid freeze-thaw cycles.
Stability:	12 months from date of despatch
Gene Name:	elastase, neutrophil expressed
Database Link:	<a href="#">Entrez Gene 1991 Human P08246</a>
Background:	Neutrophil Elastase antibody AP23184PU-N is an unconjugated sheep polyclonal antibody to human Neutrophil Elastase (HNE). Validated for ELISA, IE and IHC. Cited in 1 publication.
Synonyms:	ELANE, Bone marrow serine protease, ELA2, Elastase 2, neutrophil, Elastase-2, HLE, Medullasin, Granulocyte-derived elastase, Neutrophil elastase, NE, Human leukocyte elastase, PMN elastase, PMN-E, SCN1, Polymorphonuclear elastase, Elastase, neutrophil expressed, GE, Leukocyte elastase, Lysosomal elastase, HNE
Note:	Suitable for use in ELISA, IHC with FFPE tissues and Immunoelectrophoresis.

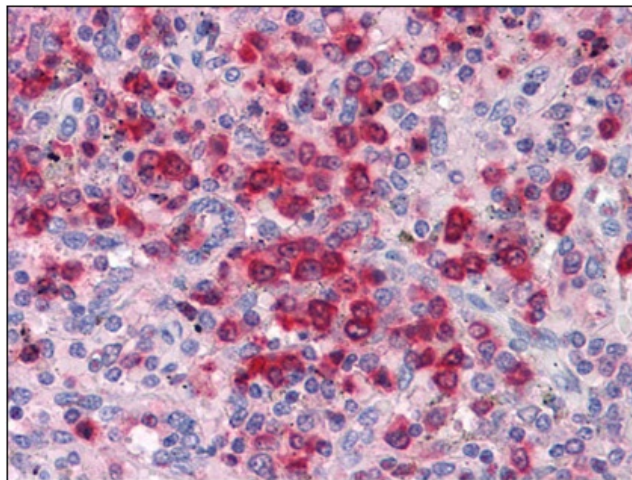


[View online »](#)

Protein Families: Protease, Transmembrane

Protein Pathways: Systemic lupus erythematosus

## Product images:



Spleen, Human: Formalin-Fixed, Paraffin-Embedded (FFPE)