

Product datasheet for **AP23181PU-N**

Factor X (F10) Sheep Polyclonal Antibody

Product data:

Product Type:	Primary Antibodies
Applications:	ELISA, ID, Ie, IHC
Recommended Dilution:	ELISA. Immunodiffusion. Immuno-electrophoresis. Immunohistochemistry on Paraffin Sections: 5 µg/ml.
Reactivity:	Human
Host:	Sheep
Isotype:	IgG
Clonality:	Polyclonal
Immunogen:	Human Factor X purified from plasma, activated and active site blocked
Specificity:	This antibody detects Coagulation factor X (F10). Affinity purified IgG was analyzed by immuno-electrophoresis. Only one arc was seen with normal plasma. No arc was seen with Factor X deficient plasma.
Formulation:	10mM HEPES, pH 7.4, 0.15M Sodium Chloride, 50% Glycerol State: Aff - Purified State: Liquid purified Ig fraction
Concentration:	lot specific
Purification:	Immunoaffinity Chromatography
Conjugation:	Unconjugated
Storage:	Store the antibody undiluted at 2-8°C for one month or (in aliquots) at -20°C for longer. Avoid repeated freezing and thawing.
Stability:	Shelf life: one year from despatch.
Gene Name:	coagulation factor X
Database Link:	Entrez Gene 2159 Human P00742



[View online »](#)

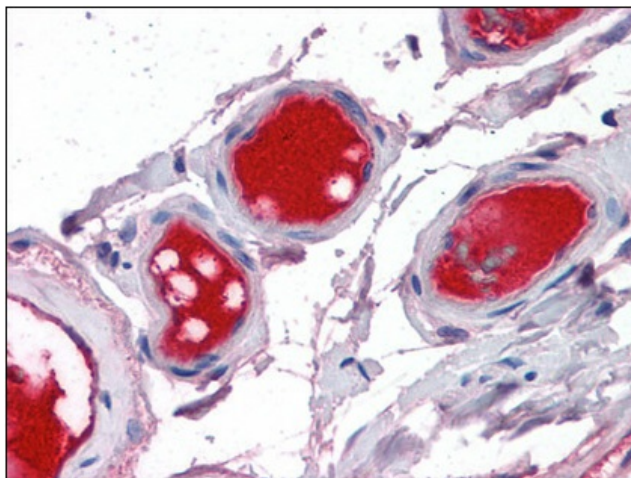
Background: F10 is the vitamin K-dependent coagulation factor X of the blood coagulation cascade. This factor undergoes multiple processing steps before its preproprotein is converted to a mature two-chain form by the excision of the tripeptide RKR. Two chains of the factor are held together by 1 or more disulfide bonds; the light chain contains 2 EGF-like domains, while the heavy chain contains the catalytic domain which is structurally homologous to those of the other hemostatic serine proteases. The mature factor is activated by the cleavage of the activation peptide by factor IXa (in the intrinsic pathway), or by factor VIIa (in the extrinsic pathway). The activated factor then converts prothrombin to thrombin in the presence of factor Va, Ca²⁺, and phospholipid during blood clotting.

Synonyms: Stuart factor, Stuart-Prower factor

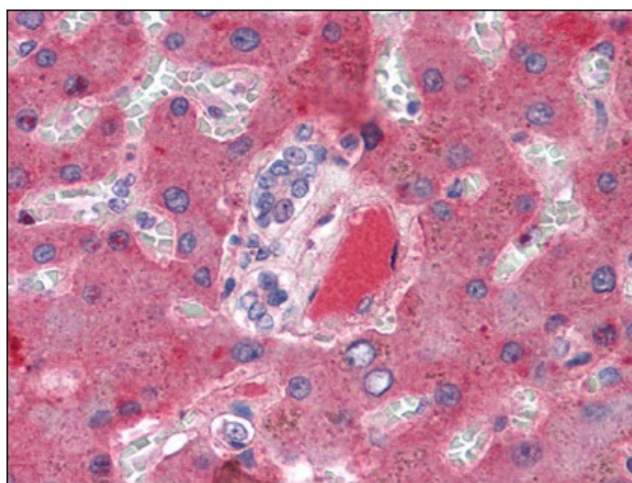
Protein Families: Druggable Genome, Protease, Transmembrane

Protein Pathways: Complement and coagulation cascades

Product images:



Small intestine, vessels: Formalin-Fixed, Paraffin-Embedded (FFPE)



Liver, vessel: Formalin-Fixed, Paraffin-Embedded (FFPE)