

Product datasheet for **AP23173PU-N**

Arp2 (ACTR2) (40-311) Rabbit Polyclonal Antibody

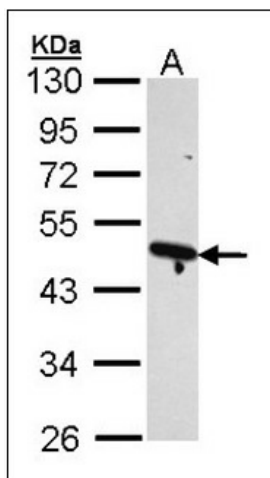
Product data:

Product Type:	Primary Antibodies
Applications:	IHC, WB
Recommended Dilution:	Immunohistochemistry on Paraffin Sections: 10 µg/ml. Western Blot: 1/500 - 1/3000.
Reactivity:	Human, Rat, Zebrafish
Host:	Rabbit
Clonality:	Polyclonal
Immunogen:	Recombinant protein fragment containing a sequence corresponding to a region within amino acids 40 and 311 of Human Arp2
Specificity:	This antibody detects ACTR2 at aa 40-311.
Formulation:	PBS, pH 7, 1% BSA, 20% Glycerol, 0.01% Thimerosal State: Aff - Purified State: Liquid Ig fraction
Concentration:	lot specific
Purification:	Immunoaffinity chromatography
Conjugation:	Unconjugated
Storage:	Store (in aliquots) at -20 °C. Dilute only prior to immediate use. Avoid repeated freezing and thawing.
Stability:	Shelf life: one year from despatch.
Gene Name:	ARP2 actin-related protein 2 homolog (yeast)
Database Link:	Entrez Gene 289820 Rat Entrez Gene 10097 Human P61160
Background:	The specific function of this gene has not yet been determined; however, the protein it encodes is known to be a major constituent of the ARP2/3 complex. This complex is located at the cell surface and is essential to cell shape and motility through lamellipodial actin assembly and protrusion.
Synonyms:	ARP2
Protein Families:	Druggable Genome

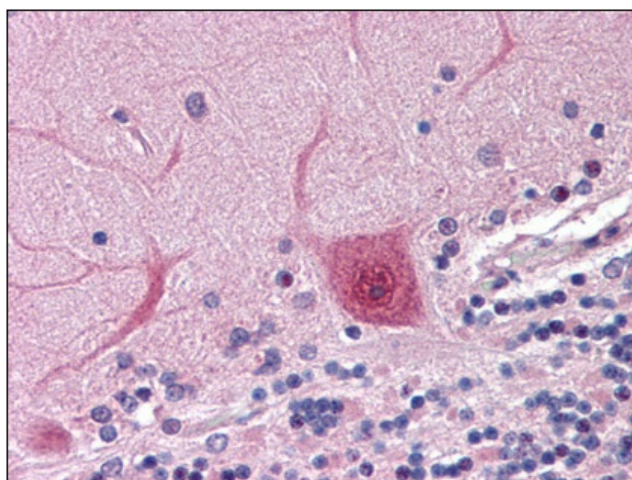


[View online »](#)

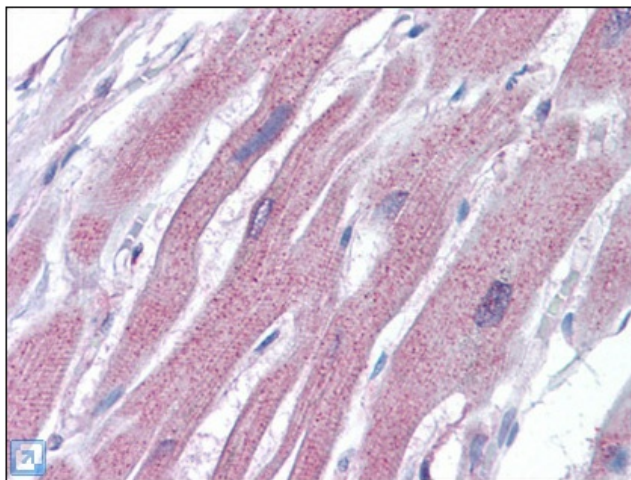
Product images:



Sample (30 ug of whole cell lysate). A: H1299.
10% SDS PAGE. ACTR2 antibody diluted at 1:1000.



Human Brain, cerebellum: Formalin-Fixed,
Paraffin-Embedded (FFPE)



Human Heart: Formalin-Fixed, Paraffin-Embedded (FFPE)