

Product datasheet for **AP23169PU-N**

ACTN2 (11-347) Rabbit Polyclonal Antibody

Product data:

Product Type:	Primary Antibodies
Applications:	IF, IHC, WB
Recommended Dilution:	Immunocytochemistry. Immunofluorescence: 1/100 - 1/200. Immunohistochemistry on Paraffin Sections: 10 µg/ml. Western Blot: 1/500 - 1/3000.
Reactivity:	Bovine, Human, Mouse, Rat, Zebrafish
Host:	Rabbit
Clonality:	Polyclonal
Immunogen:	Recombinant protein fragment containing a sequence corresponding to a region within amino acids 11 and 347 of alpha Actinin 2
Specificity:	This antibody detects Alpha-actinin-2 / ACTN2 at aa 11-347.
Formulation:	0.1 M Tris-glycine, pH 7, 20% Glycerol, 0.01% Thimerosal State: Aff - Purified State: Liquid Ig fraction
Concentration:	lot specific
Purification:	Immunoaffinity Chromatography
Conjugation:	Unconjugated
Storage:	Upon receipt, store undiluted (in aliquots) at -20°C. Avoid repeated freezing and thawing.
Stability:	Shelf life: one year from despatch.
Gene Name:	actinin alpha 2
Database Link:	<u>Entrez Gene 11472 Mouse</u> <u>Entrez Gene 291245 Rat</u> <u>Entrez Gene 88 Human</u> <u>P35609</u>



[View online »](#)

Background:

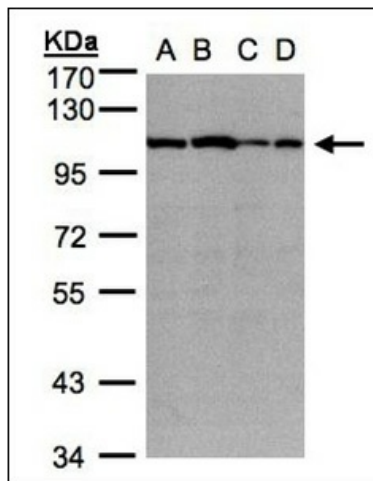
Alpha actinins belong to the spectrin gene superfamily which represents a diverse group of cytoskeletal proteins, including the alpha and beta spectrins and dystrophins. Alpha actinin is an actin-binding protein with multiple roles in different cell types. In nonmuscle cells, the cytoskeletal isoform is found along microfilament bundles and adherens-type junctions, where it is involved in binding actin to the membrane.

Synonyms:

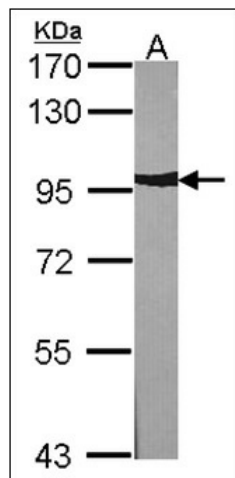
Alpha actinin skeletal muscle isoform 2

Protein Pathways:

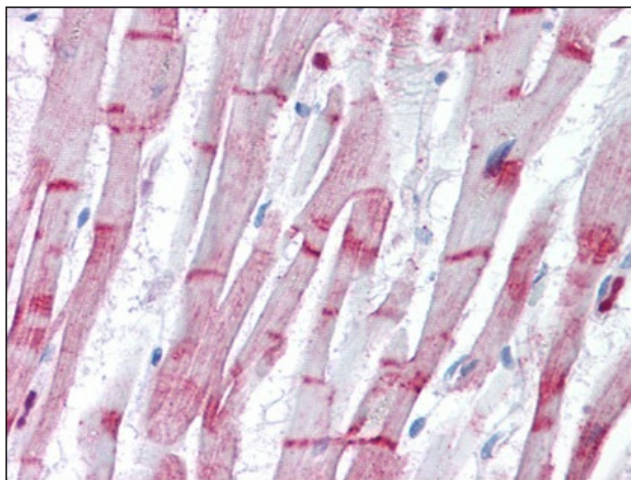
Adherens junction, Arrhythmogenic right ventricular cardiomyopathy (ARVC), Focal adhesion, Leukocyte transendothelial migration, Regulation of actin cytoskeleton, Systemic lupus erythematosus, Tight junction

Product images:


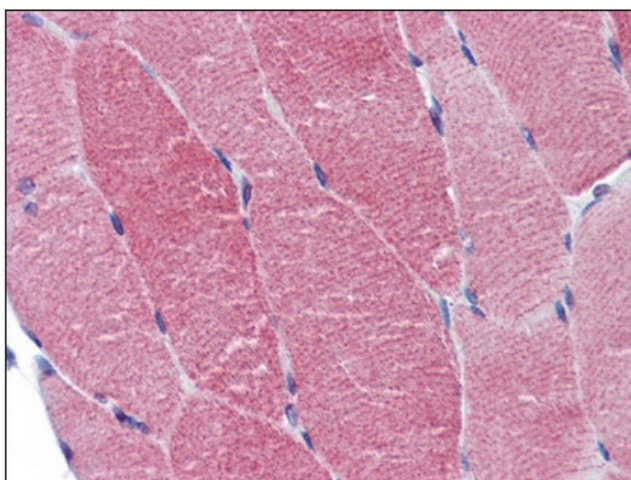
Sample (30 ug whole cell lysate). A:A431. B:H1299. C:HeLa S3. D:Hep G2. 7.5% SDS PAGE. ACTN2 antibody diluted at 1:1000.



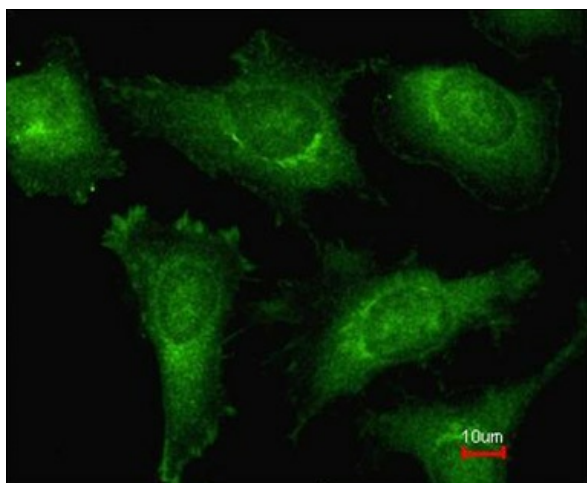
Sample (30 ug of whole cell lysate). A:NIH-3T3. 7.5% SDS PAGE. ACTN2 antibody diluted at 1:1000.



Human Heart: Formalin-Fixed, Paraffin-Embedded (FFPE)



Human Skeletal Muscle: Formalin-Fixed, Paraffin-Embedded (FFPE)



Immunofluorescence analysis of methanol-fixed HeLa, using alpha Actinin 2 antibody at 1:200 dilution.