

## Product datasheet for **AP23166PU-N**

### EEF1A2 (238-443) Rabbit Polyclonal Antibody

#### Product data:

Product Type:	Primary Antibodies
Applications:	IHC, WB
Recommended Dilution:	<b>Immunohistochemistry on Paraffin Sections:</b> 10 µg/ml. <b>Western Blot:</b> 1/500 - 1/3000.
Reactivity:	Human, Mouse, Rat, Zebrafish
Host:	Rabbit
Clonality:	Polyclonal
Immunogen:	Recombinant protein fragment containing a sequence corresponding to a region within amino acids 238 and 443 of Human elongation factor 1A2
Specificity:	This antibody detects EEF1A2.
Formulation:	0.1 M Tris-glycine, pH 7, 10% Glycerol, 0.01% Thimerosal State: Aff - Purified State: Liquid Ig fraction
Concentration:	lot specific
Purification:	Immunoaffinity Chromatography
Conjugation:	Unconjugated
Storage:	Store (in aliquots) at -20 °C. Dilute only prior to immediate use. Avoid repeated freezing and thawing.
Stability:	Shelf life: one year from despatch.
Gene Name:	eukaryotic translation elongation factor 1 alpha 2
Database Link:	<a href="#">Entrez Gene 13628 Mouse</a> <a href="#">Entrez Gene 24799 Rat</a> <a href="#">Entrez Gene 1917 Human Q05639</a>
Background:	EEF1A2 is an isoform of the alpha subunit of the elongation factor-1 complex, which is responsible for the enzymatic delivery of aminoacyl tRNAs to the ribosome. This isoform (alpha 2) is expressed in brain, heart and skeletal muscle, and the other isoform (alpha 1) is expressed in brain, placenta, lung, liver, kidney, and pancreas. This gene may be critical in the development of ovarian cancer.

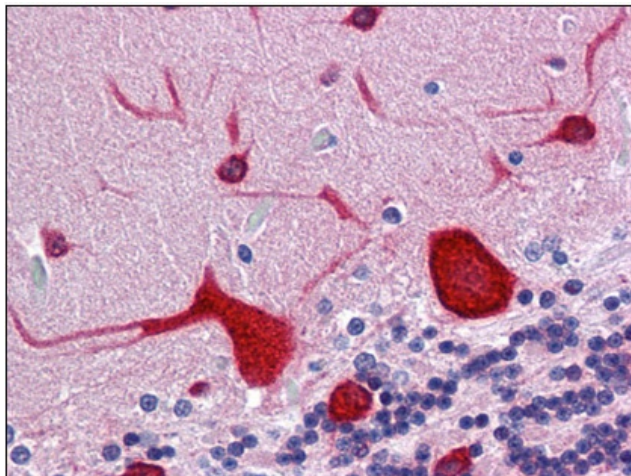


[View online »](#)

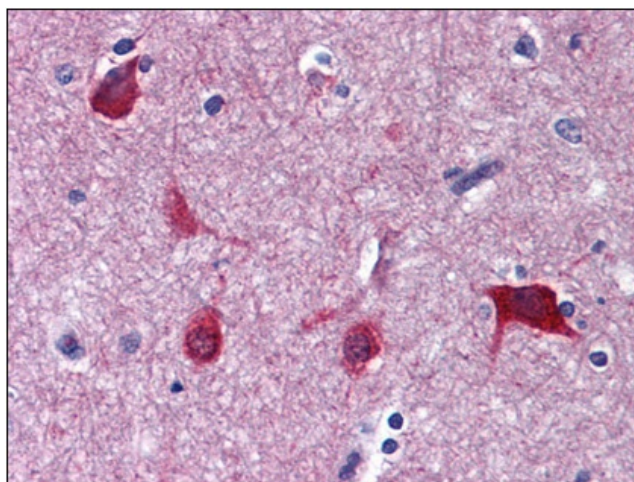
**Synonyms:** EF-1-alpha-2, eEF1A-2, Statin S1, EEF1AL, STN, HS1,EF1A, STNL, FLJ41696, Elongation factor 1-alpha 2

**Protein Families:** Druggable Genome

**Product images:**



Human Brain, cerebellum: Formalin-Fixed, Paraffin-Embedded (FFPE)



Human Brain, cortex: Formalin-Fixed, Paraffin-Embedded (FFPE)