

## Product datasheet for **AP23165PU-N**

### **RUVBL2 (304-458) Rabbit Polyclonal Antibody**

#### **Product data:**

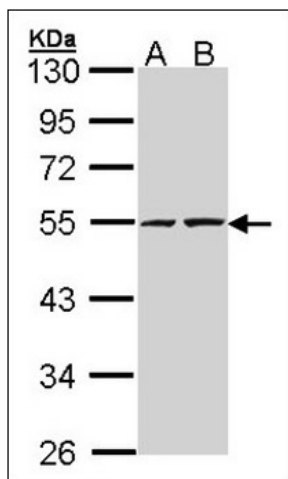
Product Type:	Primary Antibodies
Applications:	IHC, WB
Recommended Dilution:	<b>Immunohistochemistry on Paraffin Sections:</b> 10 µg/ml. <b>Western Blot:</b> 1/1000 - 1/10000.
Reactivity:	Bovine, Human, Mouse, Rat, Zebrafish
Host:	Rabbit
Clonality:	Polyclonal
Immunogen:	Recombinant protein fragment containing a sequence corresponding to a region within amino acids 304 and 458 of Human RUVBL2
Specificity:	This antibody detects RUVBL2 / TIP49B at 304-458.
Formulation:	0.1 M Tris-glycine, pH 7, 10% Glycerol, 0.01% Thimerosal State: Aff - Purified State: Liquid Ig fraction
Concentration:	lot specific
Purification:	Immunoaffinity Chromatography
Conjugation:	Unconjugated
Storage:	Store (in aliquots) at -20 °C. Dilute only prior to immediate use. Avoid repeated freezing and thawing.
Stability:	Shelf life: one year from despatch.
Gene Name:	RuvB like AAA ATPase 2
Database Link:	<a href="#">Entrez Gene 20174 Mouse</a> <a href="#">Entrez Gene 292907 Rat</a> <a href="#">Entrez Gene 10856 Human Q9Y230</a>
Background:	Possesses single-stranded DNA-stimulated ATPase and ATP-dependent DNA helicase (5' to 3') activity; hexamerization is thought to be critical for ATP hydrolysis and adjacent subunits in the ring-like structure contribute to the ATPase activity. Component of the NuA4 histone acetyltransferase complex which is involved in transcriptional activation of select genes principally by acetylation of nucleosomal histones H4 and H2A.
Synonyms:	RuvB-like 2, Reptin 52, INO80J, TIP48, TIP49B, TAP54-beta, CGI-46, ECP-51



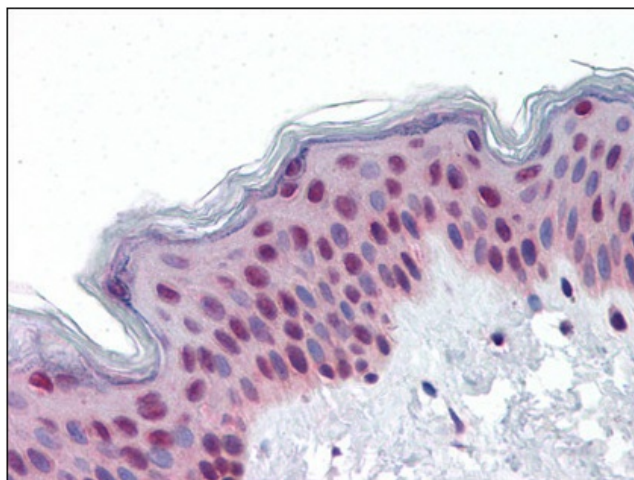
[View online >](#)

Protein Families: Transcription Factors

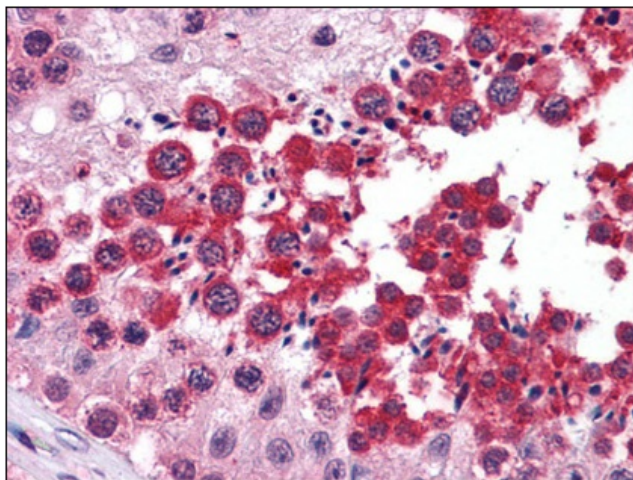
**Product images:**



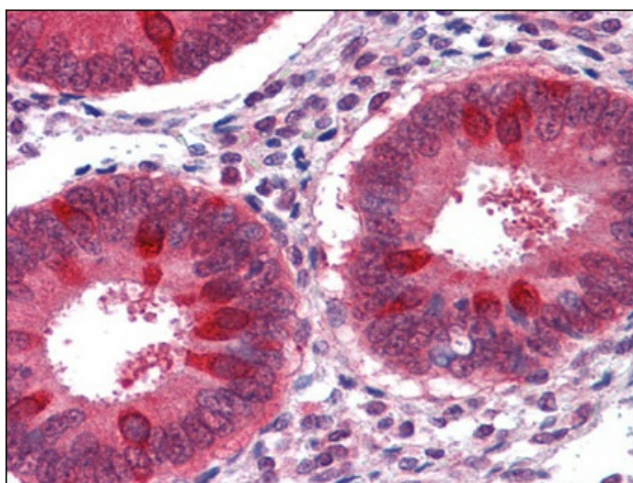
Sample (30 ug of whole cell lysate). A: A431. B: H1299. 10% SDS PAGE. RUVBL2 antibody diluted at 1:5000.



Human Skin: Formalin-Fixed, Paraffin-Embedded (FFPE)



Human Testis: Formalin-Fixed, Paraffin-Embedded (FFPE)



Human Uterus: Formalin-Fixed, Paraffin-Embedded (FFPE)