

## Product datasheet for **AP23163PU-N**

### **VRL1 (TRPV2) (595-764) Rabbit Polyclonal Antibody**

#### **Product data:**

Product Type:	Primary Antibodies
Applications:	IHC, WB
Recommended Dilution:	<b>Immunohistochemistry on Paraffin Sections:</b> 10 µg/ml. <b>Western Blot:</b> 1/500 - 1/3000.
Reactivity:	Human, Mouse
Host:	Rabbit
Clonality:	Polyclonal
Immunogen:	Recombinant protein fragment containing a sequence corresponding to a region within amino acids 595 and 764 of VRL1
Specificity:	This antibody detects TRPV2 / Vanilloid receptor-like protein 1 at aa 595-764.
Formulation:	0.1 M Tris-glycine, pH 7, 10% Glycerol containing 0.01% Thimerosal as preservative State: Aff - Purified State: Liquid purified Ig fraction
Concentration:	lot specific
Purification:	Immunoaffinity Chromatography
Conjugation:	Unconjugated
Storage:	Store the antibody in aliquots at -20°C. Avoid repeated freezing and thawing.
Stability:	Shelf life: one year from despatch.
Gene Name:	transient receptor potential cation channel subfamily V member 2
Database Link:	<a href="#">Entrez Gene 22368 Mouse</a> <a href="#">Entrez Gene 51393 Human</a> <a href="#">Q9Y5S1</a>



[View online »](#)

**Background:**

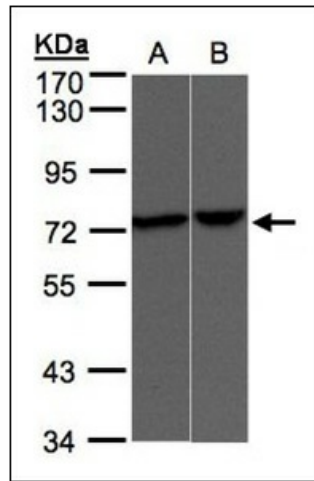
Transient Receptor Potential Vanilloid (TRPV) channels are widely expressed in both sensory and nonsensory cells. TRPV2, a member of transient receptor potential ion channels, responds to high-threshold noxious heat (with a threshold of approximately 52 degrees C), but neither to capsaicin nor to proton. TRPV2 transcripts are not restricted to the sensory nervous system, indicating that this channel may be activated by stimuli other than heat. It has been proposed that responses to noxious heat involve these related, but distinct, ion-channel subtypes that together detect a range of stimulus intensities.

**Synonyms:**

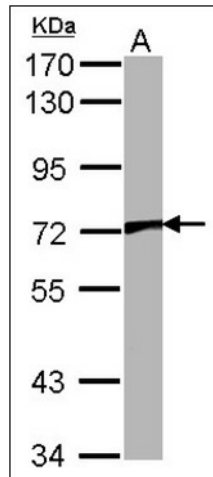
VRL, OTRPC2, Vanilloid receptor-like protein 1, VRL-1

**Protein Families:**

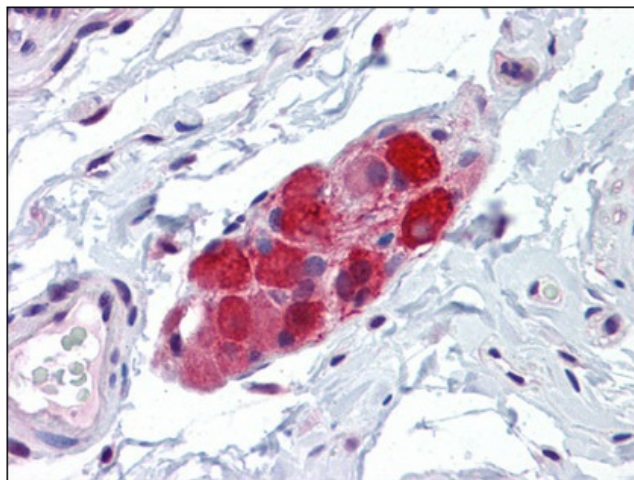
Druggable Genome, Ion Channels: Transient receptor potential, Transmembrane

**Product images:**


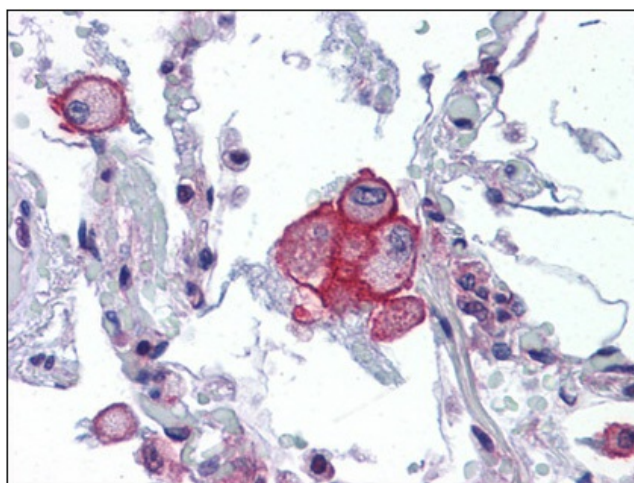
Sample (30 ug of whole cell lysate). A:A431. B:Raji. 7.5% SDS PAGE. TRPV2 antibody diluted at 1:500.



Sample (30 ug of whole cell lysate). A: NIH-3T3. 7.5% SDS PAGE. VRL1 antibody. TRPV2 antibody diluted at 1:1000.



Human Small Intestine, submucosal plexus:  
Formalin-Fixed, Paraffin-Embedded (FFPE)



Human Lung: Formalin-Fixed, Paraffin-Embedded  
(FFPE)