

Product datasheet for **AP23161PU-N**

gamma Actin (ACTG1) (1-119) Rabbit Polyclonal Antibody

Product data:

Product Type:	Primary Antibodies
Applications:	IHC, WB
Recommended Dilution:	Immunohistochemistry on Paraffin Sections: 10 µg/ml. Western Blot: 1/500 - 1/3000.
Reactivity:	Human, Monkey, Zebrafish
Host:	Rabbit
Clonality:	Polyclonal
Immunogen:	Recombinant protein fragment containing a sequence corresponding to a region within amino acids 1 and 119 of Human gamma-Actin
Specificity:	This antibody detects Actin gamma / ACTG at aa 1-119.
Formulation:	PBS, pH 7, 10% Glycerol, 0.01% Thimerosal State: Aff - Purified State: Liquid Ig fraction
Purification:	Immunoaffinity Chromatography
Conjugation:	Unconjugated
Storage:	Store undiluted at 2-8°C for one month or (in aliquots) at -20°C for longer. Avoid repeated freezing and thawing.
Stability:	Shelf life: one year from despatch.
Gene Name:	actin gamma 1
Database Link:	Entrez Gene 71 Human P63261
Background:	Actins are highly conserved proteins that are involved in various types of cell motility, and maintenance of the cytoskeleton. In vertebrates, three main groups of actin isoforms, alpha, beta and gamma have been identified. The alpha actins are found in muscle tissues and are a major constituent of the contractile apparatus. The beta and gamma actins co-exist in most cell types as components of the cytoskeleton, and as mediators of internal cell motility.
Synonyms:	ACT; ACTB; ACTG; DFNA20; DFNA26; Gamma-actin

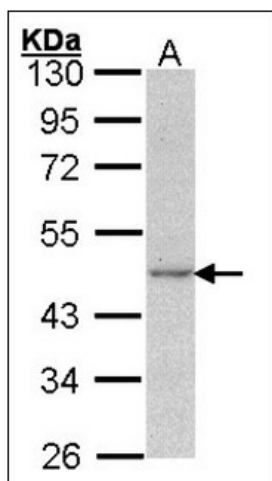


[View online »](#)

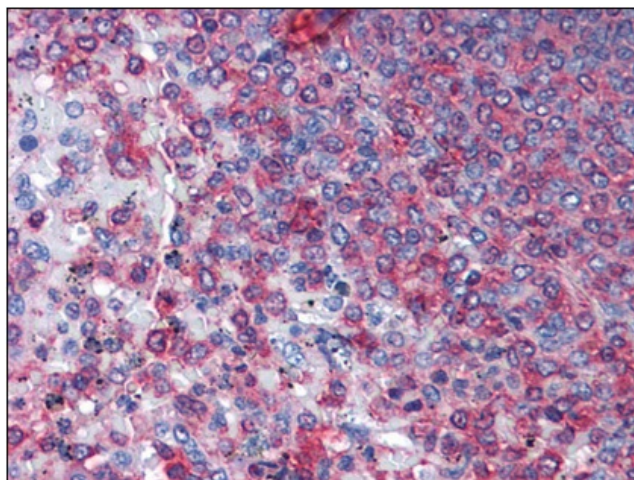
Protein Pathways:

Adherens junction, Arrhythmogenic right ventricular cardiomyopathy (ARVC), Dilated cardiomyopathy, Focal adhesion, Hypertrophic cardiomyopathy (HCM), Leukocyte transendothelial migration, Pathogenic Escherichia coli infection, Regulation of actin cytoskeleton, Tight junction, Vibrio cholerae infection, Viral myocarditis

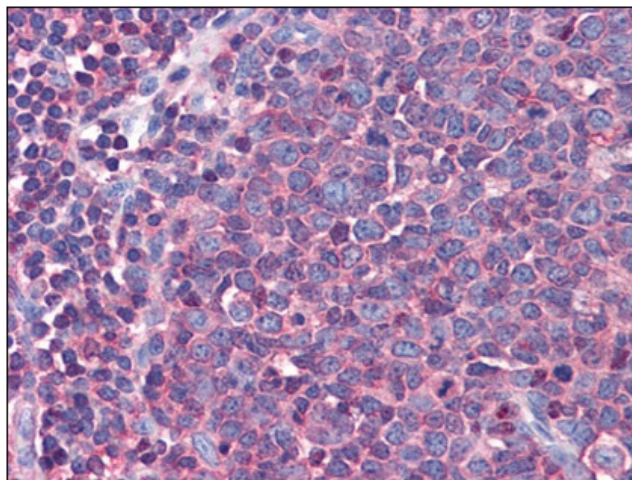
Product images:



Sample (30 ug of whole cell lysate). A: A431. 10% SDS PAGE. ACTG1 antibody diluted at 1:1000.



Human Spleen: Formalin-Fixed, Paraffin-Embedded (FFPE)



Human Tonsil: Formalin-Fixed, Paraffin-Embedded (FFPE)