

Product datasheet for **AP23160PU-N**

DAP5 (EIF4G2) (1-204) Rabbit Polyclonal Antibody

Product data:

Product Type:	Primary Antibodies
Applications:	IHC, WB
Recommended Dilution:	Immunohistochemistry on Paraffin Sections: 10 µg/ml. Western Blot: 1/500 - 1/3000.
Reactivity:	Bovine, Human, Mouse, Rabbit, Rat, Zebrafish
Host:	Rabbit
Isotype:	IgG
Clonality:	Polyclonal
Immunogen:	Recombinant protein fragment containing a sequence corresponding to a region within amino acids 1 and 204 of Human DAP5
Specificity:	This antibody reacts to Eukaryotic Translation Initiation Factor 4 Gamma, 2 (EIF4G2) at aa 1-104.
Formulation:	PBS, pH 7 containing 40% Glycerol, 0.01% Thimerosal State: Aff - Purified State: Liquid purified Ig fraction
Purification:	Immunoaffinity Chromatography
Conjugation:	Unconjugated
Storage:	Store the antibody at -20°C. Avoid repeated freezing and thawing.
Stability:	Shelf life: one year from despatch.
Gene Name:	eukaryotic translation initiation factor 4 gamma 2
Database Link:	Entrez Gene 13690 Mouse Entrez Gene 361628 Rat Entrez Gene 1982 Human P78344
Background:	Translation initiation is mediated by specific recognition of the cap structure by eukaryotic translation initiation factor 4F (eIF4F), which is a cap binding protein complex that consists of three subunits: eIF4A, eIF4E and eIF4G. The protein encoded by this gene shares similarity with the C-terminal region of eIF4G that contains the binding sites for eIF4A and eIF3; eIF4G, in addition, contains a binding site for eIF4E at the N-terminus.



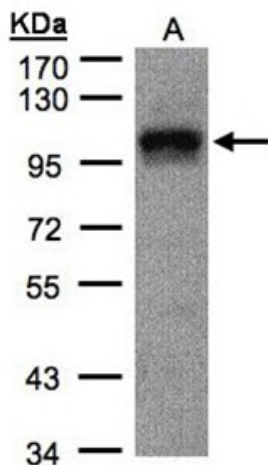
[View online »](#)

Synonyms: eIF-4-gamma 2, p97, AAG1, NAT1, FLJ41344, Death-associated protein 5

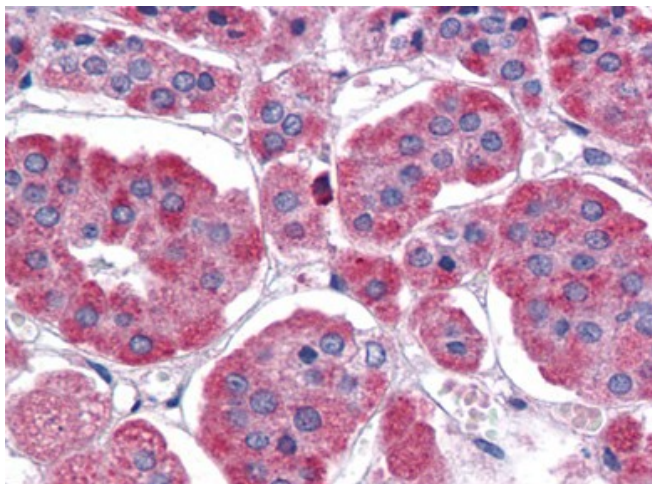
Protein Families: Transcription Factors

Protein Pathways: Viral myocarditis

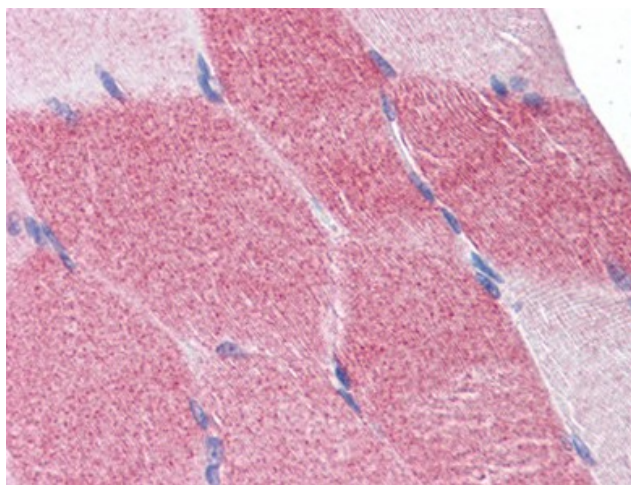
Product images:



WB Image Sample (30 ug of whole cell lysate).
A:A431. 7.5% SDS PAGE. EIF4G2 antibody
(AP23160PU-N) diluted at 1/1000



IHC Image of AP23160PU-N Human Adrenal:
Formalin-Fixed, Paraffin-Embedded (FFPE)



IHC Image of AP23160PU-N Human Skeletal Muscle: Formalin-Fixed, Paraffin-Embedded (FFPE)