

## Product datasheet for **AP23158PU-N**

### **SPI1 (1-122) Rabbit Polyclonal Antibody**

#### **Product data:**

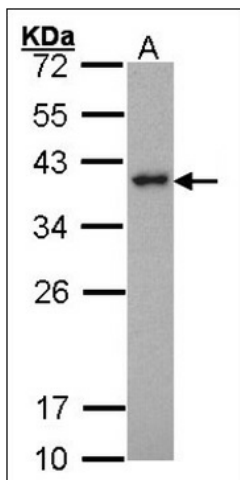
Product Type:	Primary Antibodies
Applications:	IHC, WB
Recommended Dilution:	<b>Immunohistochemistry on Paraffin Sections:</b> 10 µg/ml. <b>Western Blot:</b> 1/500 - 1/3000.
Reactivity:	Human, Porcine, Rat
Host:	Rabbit
Clonality:	Polyclonal
Immunogen:	SPI1 / PU.1 antibody was raised against recombinant protein fragment containing a sequence corresponding to a region within amino acids 1 and 122 of Human PU.1
Specificity:	This antibody detects SPI1 / PU.1 at aa 1-122.
Formulation:	PBS, pH 7, 40% Glycerol, 0.01% Thimerosal State: Aff - Purified State: Liquid Ig fraction
Concentration:	lot specific
Purification:	Immunoaffinity Chromatography
Conjugation:	Unconjugated
Storage:	Store (in aliquots) at -20 °C. Dilute only prior to immediate use. Avoid repeated freezing and thawing.
Stability:	Shelf life: one year from despatch.
Gene Name:	Spi-1 proto-oncogene
Database Link:	<a href="#">Entrez Gene 366126 Rat</a> <a href="#">Entrez Gene 6688 Human P17947</a>
Background:	Binds to the PU-box, a purine-rich DNA sequence (5'-GAGGAA-3') that can act as a lymphoid-specific enhancer. This protein is a transcriptional activator that may be specifically involved in the differentiation or activation of macrophages or B-cells. Also binds RNA and may modulate pre-mRNA splicing.
Synonyms:	Transcription factor PU.1, SPI-1 proto-oncogene, SFPI1
Protein Families:	Transcription Factors



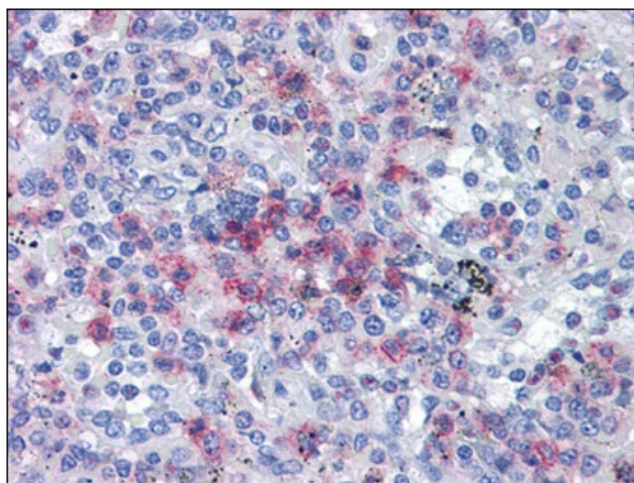
[View online »](#)

Protein Pathways: Acute myeloid leukemia, Pathways in cancer

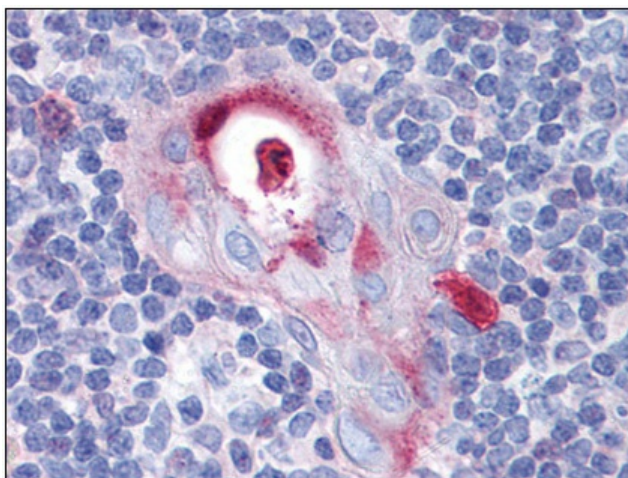
### Product images:



Sample (30 ug of whole cell lysate). A: HeLa. 12% SDS PAGE. SPI1 antibody diluted at 1:1000.



Human Spleen: Formalin-Fixed, Paraffin-Embedded (FFPE)



Human Thymus: Formalin-Fixed, Paraffin-Embedded (FFPE)