

## Product datasheet for **AP23157PU-N**

### CAD 1625-1900 Rabbit Polyclonal Antibody

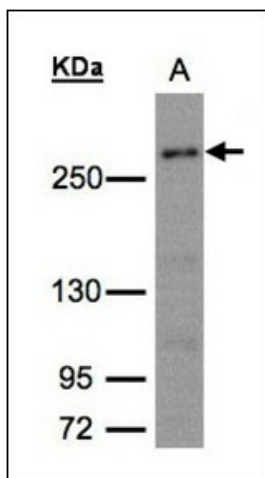
#### Product data:

|                       |   |
|-----------------------|---|
| Product Type:         | Primary Antibodies  |
| Applications:         | IHC, WB   |
| Recommended Dilution: | <b>Immunohistochemistry on Paraffin Sections:</b> 10 µg/ml.<br><b>Western Blot:</b> 1/500 - 1/3000.   |
| Reactivity:           | Human, Mouse, Rat   |
| Host:                 | Rabbit  |
| Clonality:            | Polyclonal  |
| Immunogen:            | Recombinant protein fragment containing a sequence corresponding to a region within amino acids 1625 and 1900 of Human CAD  |
| Specificity:          | This antibody detects CAD Protein at aa 1625-1900.  |
| Formulation:          | PBS, pH 7, 10% Glycerol, 0.01% Thimerosal<br>State: Aff - Purified<br>State: Liquid purified Ig fraction  |
| Purification:         | Immunoaffinity Chromatography   |
| Conjugation:          | Unconjugated  |
| Storage:              | Store undiluted at 2-8°C for one month or (in aliquots) at -20°C for longer.<br>Avoid repeated freezing and thawing.  |
| Stability:            | Shelf life: one year from despatch.   |
| Gene Name:            | carbamoyl-phosphate synthetase 2, aspartate transcarbamylase, and dihydroorotase  |
| Database Link:        | <a href="#">Entrez Gene 24240 Rat</a> <a href="#">Entrez Gene 69719 Mouse</a> <a href="#">Entrez Gene 790 Human P27708</a>  |
| Background:           | The de novo synthesis of pyrimidine nucleotides is required for mammalian cells to proliferate. This gene encodes a trifunctional protein which is associated with the enzymatic activities of the first 3 enzymes in the 6-step pathway of pyrimidine biosynthesis: carbamoylphosphate synthetase (CPS II), aspartate transcarbamoylase, and dihydroorotase. |
| Synonyms:             | Dihydroorotase, GATase, ACTase, DHOase  |
| Protein Families:     | Druggable Genome  |
| Protein Pathways:     | Alanine, aspartate and glutamate metabolism, Metabolic pathways, Pyrimidine metabolism  |

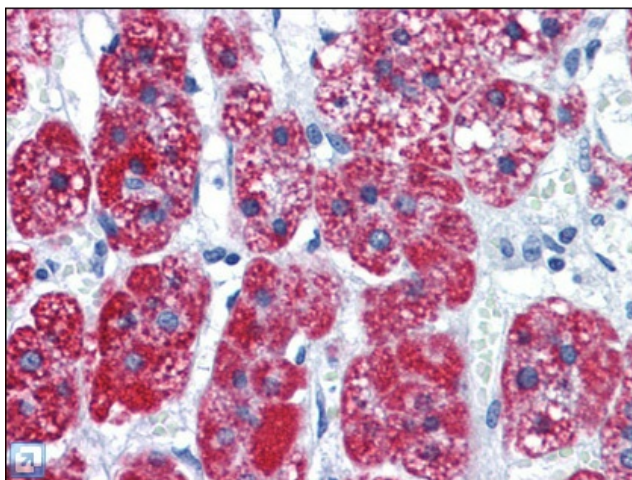


[View online »](#)

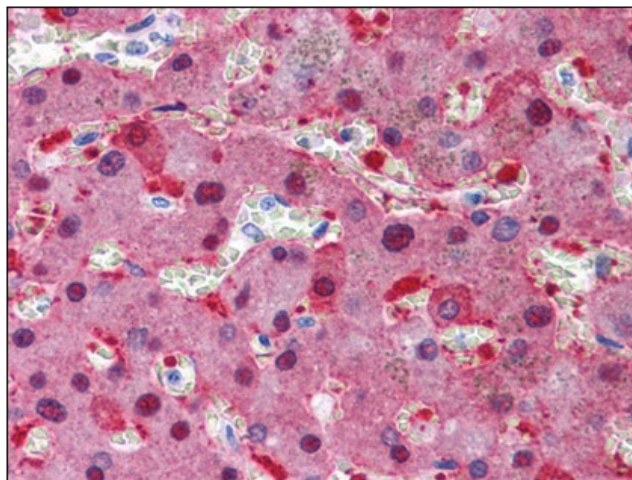
## Product images:



Sample (30 ug whole cell lysate). A:293T whole cell lysate. 5% SDS PAGE. CAD antibody diluted at 1:1500



Human Adrenal: Formalin-Fixed, Paraffin-Embedded (FFPE)



Human Liver: Formalin-Fixed, Paraffin-Embedded (FFPE)