

Product datasheet for **AP23156PU-N**

Alkyl DHAP synthase (AGPS) (370-628) Rabbit Polyclonal Antibody

Product data:

Product Type:	Primary Antibodies
Applications:	IHC, WB
Recommended Dilution:	Immunohistochemistry on Paraffin Sections: 10 µg/ml. Western Blot: 1/500 - 1/3000.
Reactivity:	Human, Mouse, Rat, Zebrafish
Host:	Rabbit
Clonality:	Polyclonal
Immunogen:	Recombinant protein fragment containing a sequence corresponding to a region within amino acids 370 and 628 of Alkyl-DHAP synthase
Specificity:	This antibody detects AGPS / AAG5 at aa 370-628.
Formulation:	PBS, pH 7, 40% Glycerol, 0.01% Thimerosal State: Aff - Purified State: Liquid Ig fraction
Concentration:	lot specific
Purification:	Immunoaffinity Chromatography
Conjugation:	Unconjugated
Storage:	Store (in aliquots) at -20 °C. Dilute only prior to immediate use. Avoid repeated freezing and thawing.
Stability:	Shelf life: one year from despatch.
Gene Name:	alkylglycerone phosphate synthase
Database Link:	Entrez Gene 84114 Rat Entrez Gene 228061 Mouse Entrez Gene 8540 Human O00116



[View online »](#)

Background:

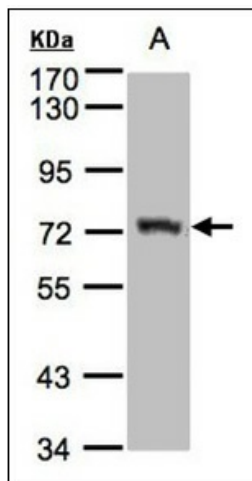
Alkylglycerone phosphate synthase (AGPS) belongs to a group of peroxisomal enzymes that catalyze the first step in ether phospholipid biosynthesis which involves the acylation of dihydroxyacetonephosphate followed by the introduction of the ether linkage by alkyl-DHAP synthase. Human AGPS shares a 92% nucleotide and amino acid sequence similarity with the guinea pig sequences, and the human sequence was identified by virtue of this homology. Both proteins contain identical peroxisomal targeting signal 2 sequences in their N-terminal presequences. Deficiency of AGPS in peroxisomes has been found in patients with the following peroxisomal disorders: Zellweger syndrome, rhizomelic chondrodysplasia punctata and adrenoleukodystrophy.

Synonyms:

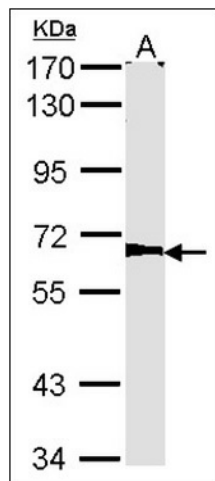
Alkyl-DHAP synthase

Protein Pathways:

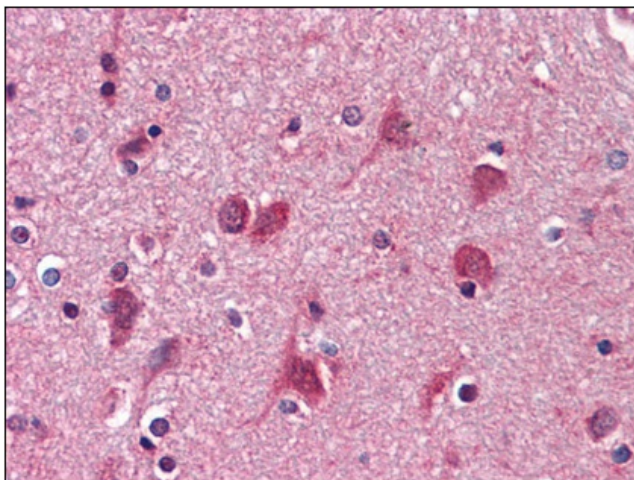
Ether lipid metabolism, Metabolic pathways

Product images:

Sample (30 ug of whole cell lysate). A: Raji. 7.5% SDS PAGE. AGPS antibody diluted at 1:1500.



Sample (30 ug of whole cell lysate). A: NIH-3T3. 7.5% SDS PAGE. Alkyl-DHAP synthase antibody. AGPS antibody diluted at 1:1000.



Human Brain, cortex: Formalin-Fixed, Paraffin-Embedded (FFPE)