

Product datasheet for **AP23152PU-N**

Growth Hormone (GH1) (1-217) Rabbit Polyclonal Antibody

Product data:

Product Type:	Primary Antibodies
Applications:	IHC, WB
Recommended Dilution:	Immunohistochemistry on Paraffin Sections: 10 µg/ml. Western Blot: 1/500 - 1/3000.
Reactivity:	Human, Monkey
Host:	Rabbit
Clonality:	Polyclonal
Immunogen:	Recombinant protein fragment containing a sequence corresponding to a region within amino acids 1 and 217 of Human Growth hormone
Specificity:	This antibody detects GH1 at aa 1-217.
Formulation:	0.1 M Tris-glycine, pH 7, 10% Glycerol, 0.01% Thimerosal State: Aff - Purified State: Liquid Ig fraction
Concentration:	lot specific
Purification:	Immunoaffinity Chromatography
Conjugation:	Unconjugated
Storage:	Store (in aliquots) at -20 °C. Dilute only prior to immediate use. Avoid repeated freezing and thawing.
Stability:	Shelf life: one year from despatch.
Gene Name:	growth hormone 1
Database Link:	Entrez Gene 2688 Human P01241



[View online »](#)

Background:

The protein encoded by this gene is a member of the somatotropin/prolactin family of hormones which play an important role in growth control. The gene, along with four other related genes, is located at the growth hormone locus on chromosome 17 where they are interspersed in the same transcriptional orientation; an arrangement which is thought to have evolved by a series of gene duplications. The five genes share a remarkably high degree of sequence identity. Alternative splicing generates additional isoforms of each of the five growth hormones, leading to further diversity and potential for specialization. Mutations in or deletions of the gene lead to growth hormone deficiency and short stature.

Synonyms:

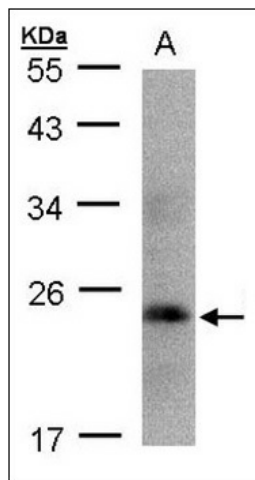
Pituitary growth hormone, Growth hormone 1, HGH

Protein Families:

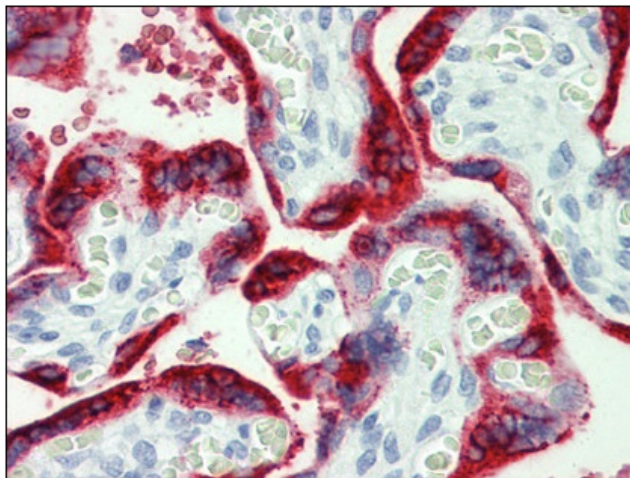
Druggable Genome, Secreted Protein

Protein Pathways:

Cytokine-cytokine receptor interaction, Jak-STAT signaling pathway, Neuroactive ligand-receptor interaction

Product images:


Sample (30 ug whole cell lysate). A:293T. 12% SDS PAGE. GH1 antibody diluted at 1:1000



Human Placenta: Formalin-Fixed, Paraffin-Embedded (FFPE)