

Product datasheet for **AP23149PU-N**

MMP3 (1-35) Rabbit Polyclonal Antibody

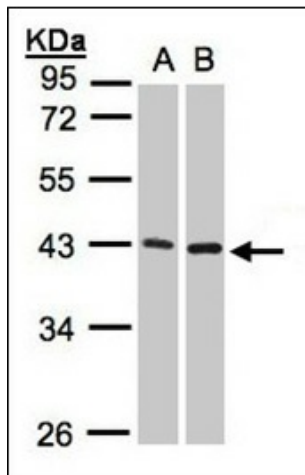
Product data:

Product Type:	Primary Antibodies
Applications:	ICC, IF, IHC, WB
Recommended Dilution:	ICC IF (1:100 - 1:200) IHC IHC-P (10 µg/ml) WB (1:500 - 1:3000)
Reactivity:	Human
Host:	Rabbit
Clonality:	Polyclonal
Immunogen:	Carrier-protein conjugated synthetic peptide encompassing a sequence within the N-terminus region of human MMP3. The exact sequence is proprietary.
Specificity:	Human MMP3.
Formulation:	0.1 M Tris, pH 7, 0.1 M Glycine, 10% Glycerol, 0.01% Thimerosal
Concentration:	lot specific
Purification:	Immunoaffinity purified
Conjugation:	Unconjugated
Storage:	Keep as concentrated solution. Short term: Store at 4°C. Long term: Aliquot and store at -20°C or below. Avoid multiple freeze-thaw cycles.
Stability:	12 months from date of despatch
Gene Name:	matrix metalloproteinase 3
Database Link:	Entrez Gene 4314 Human P08254
Background:	MMP3 antibody AP23149PU-N is an unconjugated rabbit polyclonal antibody to human MMP3. Validated for ICC, IF, IHC and WB. Tested on 20 paraffin-embedded human tissues.
Synonyms:	MMP3, CHDS6, MMP-3, Prostromelysin-1, Proteoglycanase, SL-1, STR1, Matrix metalloproteinase-3, Transin, Transin-1, SLN-1, STMY, Progelatinase, STMY1, Stromelysin-1
Protein Families:	Druggable Genome, Protease

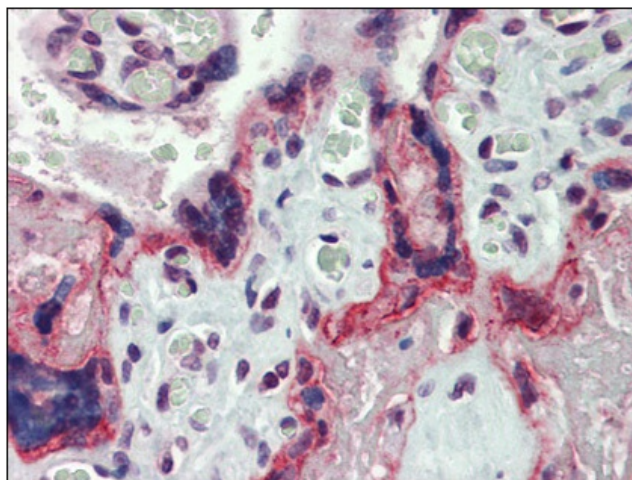


[View online »](#)

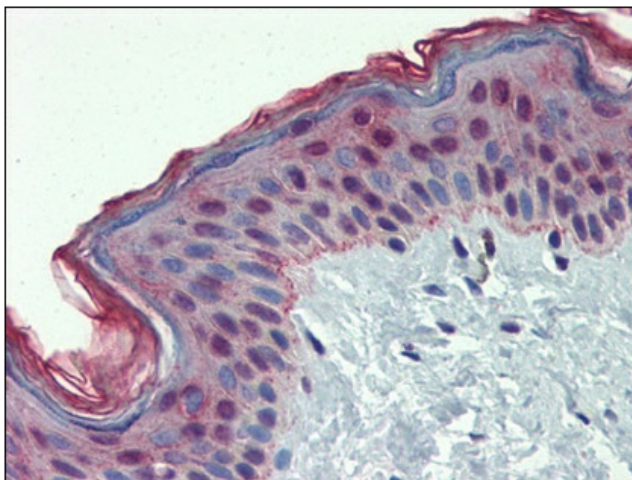
Product images:



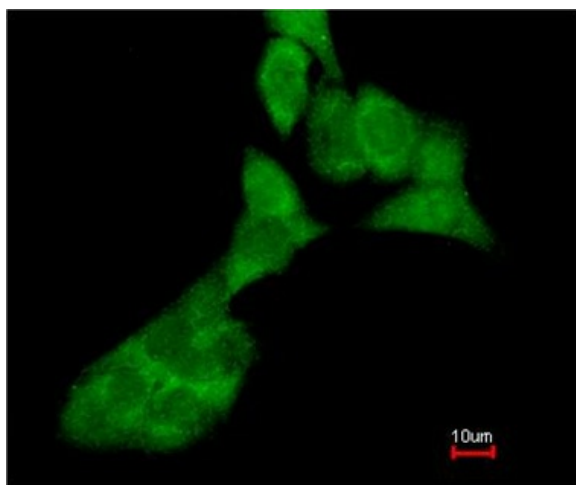
Sample (30 ug whole cell lysate). A:293T. B:Raji.
10% SDS PAGE. MMP3 antibody diluted at 1:1000



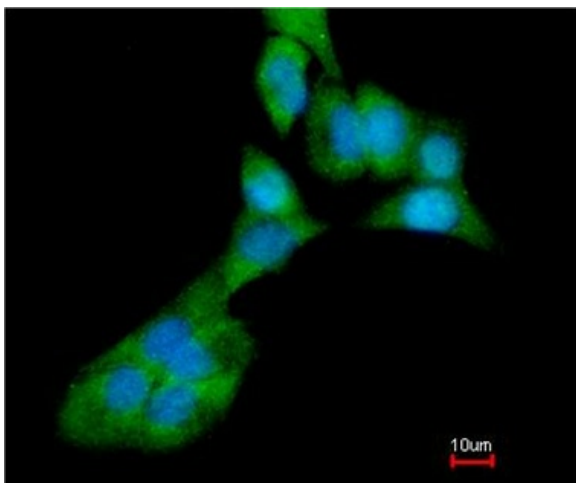
Human Placenta: Formalin-Fixed, Paraffin-Embedded (FFPE)



Human Skin: Formalin-Fixed, Paraffin-Embedded (FFPE)



Immunofluorescence analysis of paraformaldehyde-fixed A549, using MMP3 antibody at 1:200 dilution.



Immunofluorescence analysis of paraformaldehyde-fixed A549, merged with DNA probe using MMP3 antibody at 1:200 dilution.