

Product datasheet for **AP23146PU-N**

YES1 (284-541) Rabbit Polyclonal Antibody

Product data:

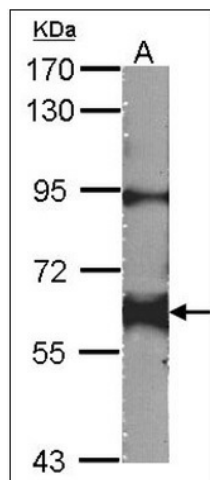
Product Type:	Primary Antibodies
Applications:	IF, IHC, WB
Recommended Dilution:	Immunocytochemistry. Immunofluorescence: 1/100 - 1/200. Immunohistochemistry on Paraffin Sections: 10 µg/ml. Western Blot: 1/500 - 1/3000.
Reactivity:	Canine, Human, Rat, Zebrafish, Mouse
Host:	Rabbit
Clonality:	Polyclonal
Immunogen:	Recombinant protein fragment containing a sequence corresponding to a region within amino acids 284 and 541 of Human c-Yes
Specificity:	This antibody detects YES1 at 284-541.
Formulation:	PBS, pH 7, 1% BSA, 20% Glycerol, 0.01% Thimerosal State: Aff - Purified State: Liquid Ig fraction
Concentration:	lot specific
Purification:	Immunoaffinity chromatography
Conjugation:	Unconjugated
Storage:	Store (in aliquots) at -20 °C. Dilute only prior to immediate use. Avoid repeated freezing and thawing.
Stability:	Shelf life: one year from despatch.
Gene Name:	YES proto-oncogene 1, Src family tyrosine kinase
Database Link:	Entrez Gene 22612 Mouse Entrez Gene 24884 Rat Entrez Gene 7525 Human P07947
Background:	C-YES-1 is a non-receptor tyrosine kinase belonging to the Src subfamily. C-YES-1 is a proto-oncogene that has been shown to be associated with various cancers.
Synonyms:	YES, p61-Yes, c-Yes
Protein Families:	Druggable Genome, Protein Kinase



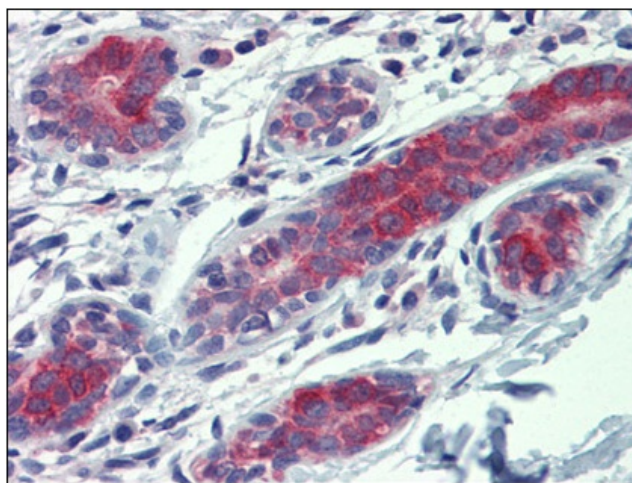
[View online »](#)

Protein Pathways: Adherens junction, Tight junction

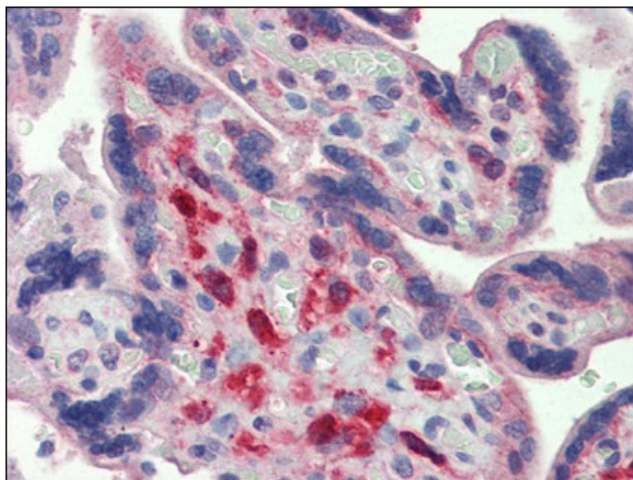
Product images:



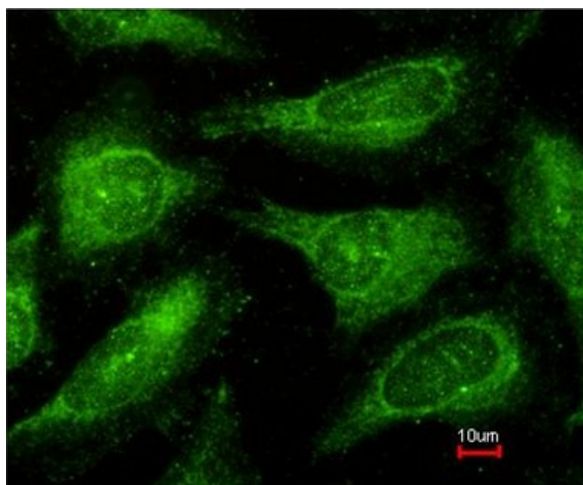
Sample (30 ug of whole cell lysate). A:NIH-3T3.
7.5% SDS PAGE. YES1 antibody diluted at 1:1000.



Human Breast: Formalin-Fixed, Paraffin-Embedded (FFPE)



Human Placenta: Formalin-Fixed, Paraffin-Embedded (FFPE)



Immunofluorescence analysis of methanol-fixed HeLa, using c-Yes antibody at 1:200 dilution.