

## Product datasheet for **AP23139PU-N**

### PDGF beta (PDGFB) (222-233) Goat Polyclonal Antibody

#### Product data:

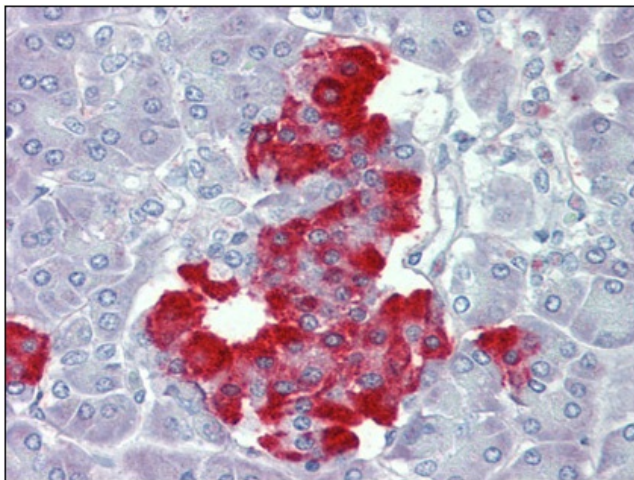
Product Type:	Primary Antibodies
Applications:	IHC
Recommended Dilution:	<b>Immunohistochemistry on Paraffin Sections:</b> 3.75 µg/ml.
Reactivity:	Human, Bovine, Sheep
Host:	Goat
Clonality:	Polyclonal
Immunogen:	Synthetic peptide from C-Terminus of human PDGFB (NP_002599.1; NP_148937.1)
Specificity:	This antibody detects PDGFB (C-term).
Formulation:	Tris saline, pH 7.3 containing 0.02% sodium azide as preservative and 0.5% BSA as stabilizer State: Aff - Purified State: Liquid purified Ig fraction
Concentration:	lot specific
Purification:	Immunoaffinity Chromatography
Conjugation:	Unconjugated
Storage:	Store the antibody undiluted at 2-8°C for one month or (in aliquots) at -20°C for longer. Avoid repeated freezing and thawing.
Stability:	Shelf life: one year from despatch.
Gene Name:	platelet derived growth factor subunit B
Database Link:	<a href="#">Entrez Gene 5155 Human P01127</a>
Background:	PDGF-B is the major polypeptide mitogen in serum for cells of mesenchymal origin; it promotes cellular proliferation and inhibits apoptosis.
Synonyms:	Platelet-derived growth factor subunit B, PDGF beta, PDGF B, PDGF-B, Platelet-derived growth factor beta, PDGF subunit B, Platelet-derived growth factor B chain, PDGF2, PDGF-2, c-Sis, SIS, Becaplermin
Protein Families:	Druggable Genome



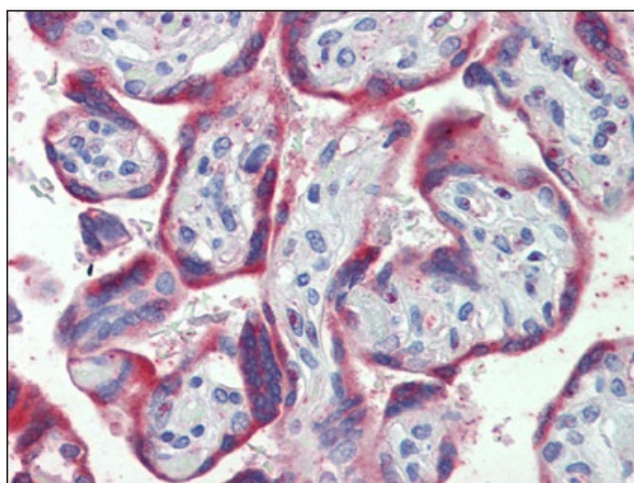
[View online »](#)

**Protein Pathways:** Cytokine-cytokine receptor interaction, Focal adhesion, Gap junction, Glioma, MAPK signaling pathway, Melanoma, Pathways in cancer, Prostate cancer, Regulation of actin cytoskeleton, Renal cell carcinoma

**Product images:**



Pancreas, Human: Formalin-Fixed, Paraffin-Embedded (FFPE)



Placenta, Human: Formalin-Fixed, Paraffin-Embedded (FFPE)