

## Product datasheet for **AP23132PU-N**

### SGLT1 (SLC5A1) Goat Polyclonal Antibody

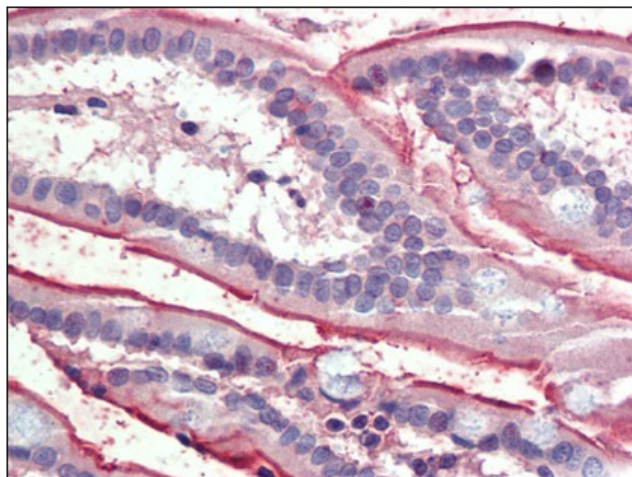
#### Product data:

Product Type:	Primary Antibodies
Applications:	IHC
Recommended Dilution:	<b>Immunohistochemistry on Paraffin Sections:</b> 3.75 µg/ml.
Reactivity:	Human
Host:	Goat
Clonality:	Polyclonal
Immunogen:	Recombinant protein
Specificity:	This antibody detects SGLT1 / SLC5A1 (Internal).
Formulation:	Tris saline, pH 7.3 containing 0.02% sodium azide as preservative and 0.5% BSA as stabilizer State: Purified State: Liquid purified Ig fraction
Concentration:	lot specific
Purification:	Immunoaffinity Chromatography
Conjugation:	Unconjugated
Storage:	Store the antibody undiluted at 2-8°C for one month or (in aliquots) at -20°C for longer. Avoid repeated freezing and thawing.
Stability:	Shelf life: one year from despatch.
Gene Name:	solute carrier family 5 member 1
Database Link:	<a href="#">Entrez Gene 6523 Human P13866</a>
Background:	Solute Carrier Family 5 Member 1 (Slc5a1/SGLT1) is a member of the sodium dependent glucose transporters also known as co transporters or symporters. It is an integral membrane protein involved in the active transport of glucose and galactose across the membrane of cells lining the gi tract and kidney. Transport is driven by the sodium/potassium ATPase.
Synonyms:	Sodium/glucose cotransporter 1, NAGT
Protein Families:	Druggable Genome, Transmembrane



[View online »](#)

**Product images:**



Small intestine, Human: Formalin-Fixed, Paraffin-Embedded (FFPE)