

## Product datasheet for **AP23128PU-N**

### **DLGAP1 (391-405) Goat Polyclonal Antibody**

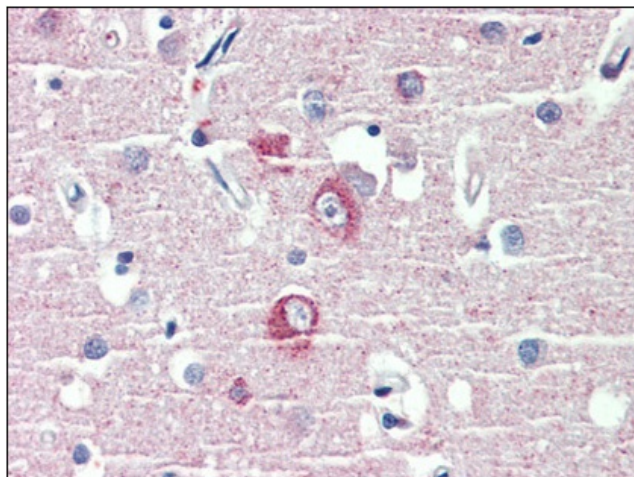
#### **Product data:**

Product Type:	Primary Antibodies
Applications:	IHC
Recommended Dilution:	<b>Immunohistochemistry on Paraffin Sections:</b> 3.75 µg/ml.
Reactivity:	Human, Bovine, Bat, Canine, Equine, Hamster, Mouse, Rabbit, Rat, Xenopus
Host:	Goat
Clonality:	Polyclonal
Immunogen:	Synthetic peptide from an internal region of human DLGAP1 (NP_004737.2; NP_001003809.1)
Specificity:	This antibody detects DLGAP1 / SAPAP1 (Internal).
Formulation:	Tris saline, pH 7.3 containing 0.02% sodium azide as preservative and 0.5% BSA as stabilizer State: Aff - Purified State: Liquid purified Ig fraction
Concentration:	lot specific
Purification:	Immunoaffinity Chromatography
Conjugation:	Unconjugated
Storage:	Store the antibody undiluted at 2-8°C for one month or (in aliquots) at -20°C for longer. Avoid repeated freezing and thawing.
Stability:	Shelf life: one year from despatch.
Gene Name:	DLG associated protein 1
Database Link:	<a href="#">Entrez Gene 65040 Rat</a> <a href="#">Entrez Gene 224997 Mouse</a> <a href="#">Entrez Gene 9229 Human O14490</a>
Background:	Part of the postsynaptic scaffold in neuronal cells.
Synonyms:	DAP1, DAP-1, GKAP



[View online »](#)

**Product images:**



Brain, cortex, Human: Formalin-Fixed, Paraffin-Embedded (FFPE)