

Product datasheet for **AP23127PU-N**

RASSF1 (135-147) Goat Polyclonal Antibody

Product data:

Product Type:	Primary Antibodies
Applications:	IHC
Recommended Dilution:	Immunohistochemistry on Paraffin Sections: 3.75 µg/ml.
Reactivity:	Human, Bovine, Bat, Equine, Porcine
Host:	Goat
Clonality:	Polyclonal
Immunogen:	Synthetic peptide from an internal region of human RASSF1 / RASSF1A (NP_009113.3; NP_733830.1; NP_733831.1; NP_733832.1)
Specificity:	This antibody detects RASSF1 (Internal). It is expected to recognize reported isoforms A, C and D (NP_009113.3; NP_733831.1; NP_733832.1).
Formulation:	Tris saline, pH 7.3 containing 0.02% sodium azide as preservative and 0.5% BSA as stabilizer State: Aff - Purified State: Liquid purified Ig fraction
Concentration:	lot specific
Purification:	Immunoaffinity Chromatography
Conjugation:	Unconjugated
Storage:	Store the antibody undiluted at 2-8°C for one month or (in aliquots) at -20°C for longer. Avoid repeated freezing and thawing.
Stability:	Shelf life: one year from despatch.
Gene Name:	Ras association domain family member 1
Database Link:	Entrez Gene 11186 Human Q9NS23



[View online »](#)

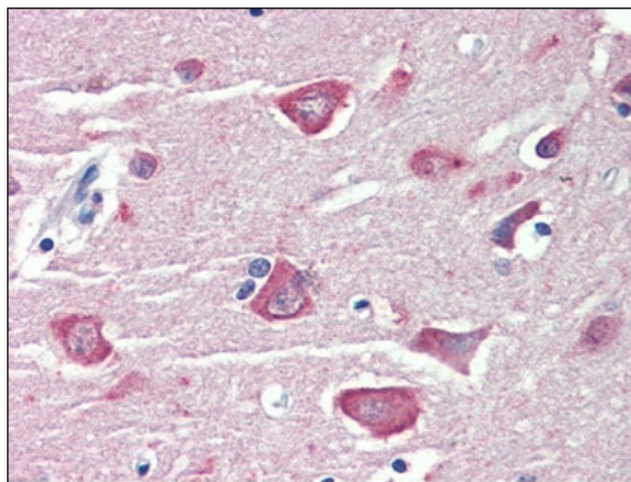
Background: Potential tumor suppressor. Required for death receptor-dependent apoptosis. Mediates activation of STK3/MST2 and STK4/MST1 during Fas-induced apoptosis by preventing their dephosphorylation. When associated with MOAP1, promotes BAX conformational change and translocation to mitochondrial membranes in response to TNF and TNFSF10 stimulation. Isoform A interacts with CDC20, an activator of the anaphase-promoting complex, APC, resulting in the inhibition of APC activity and mitotic progression.

Synonyms: RASSF1A, RDA32, REH3P21, NORE2A

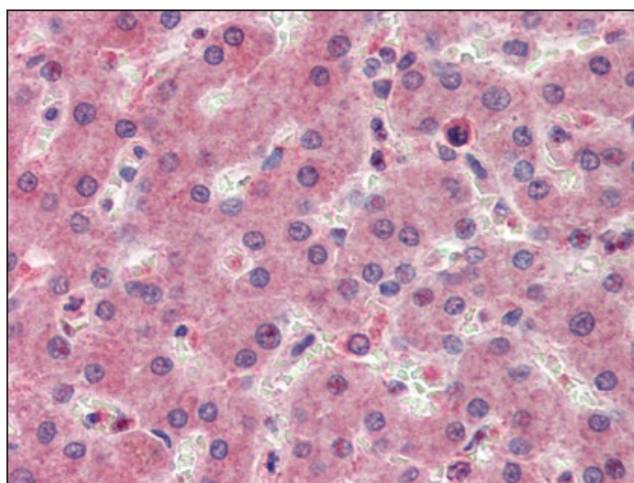
Protein Families: Druggable Genome

Protein Pathways: Bladder cancer, Non-small cell lung cancer, Pathways in cancer

Product images:



Brain, cortex, Human: Formalin-Fixed, Paraffin-Embedded (FFPE)



Liver, Human: Formalin-Fixed, Paraffin-Embedded (FFPE)