

Product datasheet for **AP23124PU-N**

PDCD5 (C-term) Rabbit Polyclonal Antibody

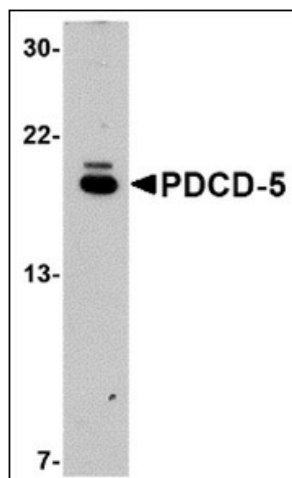
Product data:

Product Type:	Primary Antibodies
Applications:	ELISA, IHC, WB
Recommended Dilution:	ELISA. Immunohistochemistry on Paraffin Sections: 5 µg/ml. Western Blot: 1 µg/ml.
Reactivity:	Human, Mouse, Rat
Host:	Rabbit
Clonality:	Polyclonal
Immunogen:	21 amino acid peptide from near the carboxy terminus of human PDCD5
Specificity:	This antibody detects PDCD5 (C-term).
Formulation:	PBS containing 0.02% sodium azide State: Purified State: Liquid Ig fraction
Concentration:	lot specific
Purification:	Immunoaffinity Chromatography
Conjugation:	Unconjugated
Storage:	Store the antibody at 2 - 8 °C. DO NOT FREEZE!
Stability:	Shelf life: one year from despatch.
Gene Name:	programmed cell death 5
Database Link:	<u>Entrez Gene 56330 Mouse</u> <u>Entrez Gene 292814 Rat</u> <u>Entrez Gene 9141 Human</u> <u>O14737</u>
Synonyms:	TFAR19

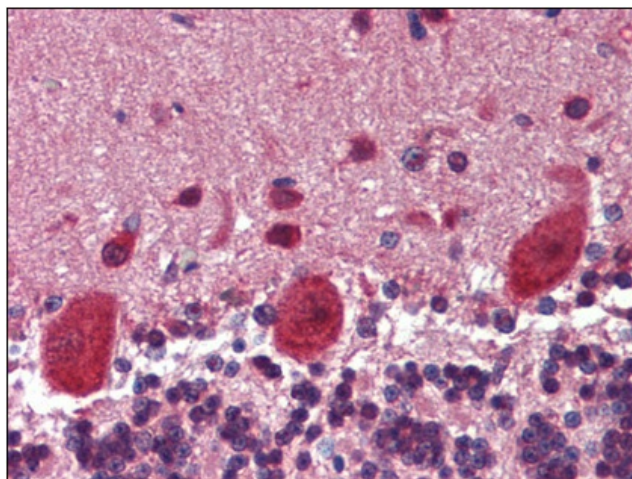


[View online »](#)

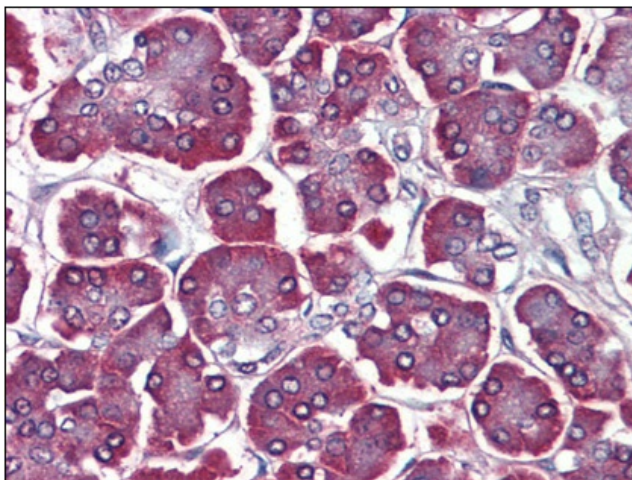
Product images:



Western blot analysis of PDCD5 in EL4 cell lysate with PDCD5 antibody at 1 ug/ml



Human Brain, cerebellum: Formalin-Fixed, Paraffin-Embedded (FFPE)



Human Pancreas: Formalin-Fixed, Paraffin-Embedded (FFPE)