

## Product datasheet for **AP23123PU-N**

### JPH4 Rabbit Polyclonal Antibody

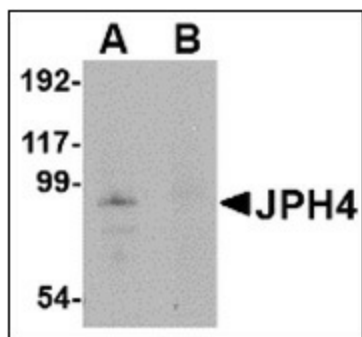
#### Product data:

Product Type:	Primary Antibodies
Applications:	ELISA, IHC, WB
Recommended Dilution:	<b>ELISA.</b> <b>Immunohistochemistry on Paraffin Sections:</b> 5 µg/ml. <b>Western Blot:</b> 1 - 2 µg/ml.
Reactivity:	Human, Mouse, Rat
Host:	Rabbit
Clonality:	Polyclonal
Immunogen:	A 17 amino acid peptide near the center of human JPH4
Specificity:	This antibody detects Junctophilin-4 / JPH4 (Internal).
Formulation:	PBS containing 0.02% sodium azide State: Purified State: Liquid Ig fraction
Concentration:	lot specific
Purification:	Immunoaffinity chromatography
Conjugation:	Unconjugated
Storage:	Store at 2 - 8 °C. Do not freeze.
Stability:	Shelf life: one year from despatch.
Gene Name:	junctophilin 4
Database Link:	<a href="#">Entrez Gene 319984 Mouse</a> <a href="#">Entrez Gene 445271 Rat</a> <a href="#">Entrez Gene 84502 Human</a> <a href="#">Q96JJ6</a>
Synonyms:	JPHL1, KIAA1831, JP4

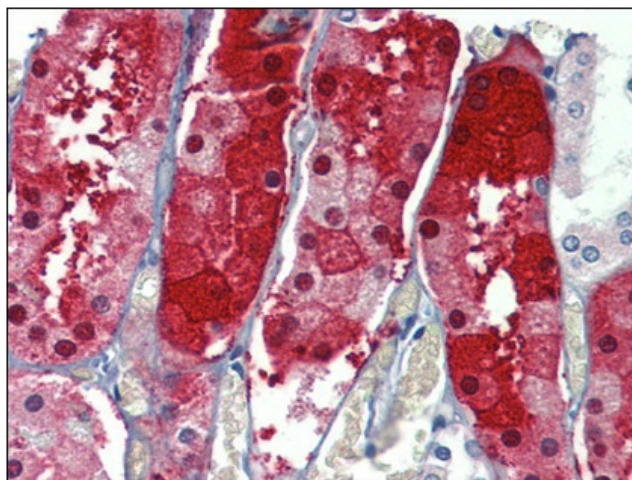


[View online »](#)

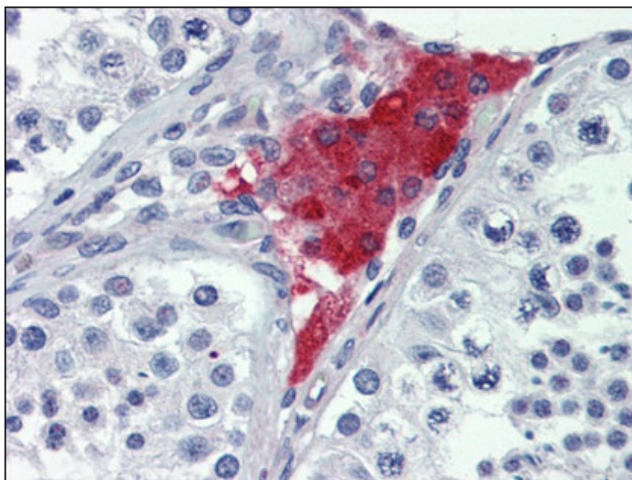
## Product images:



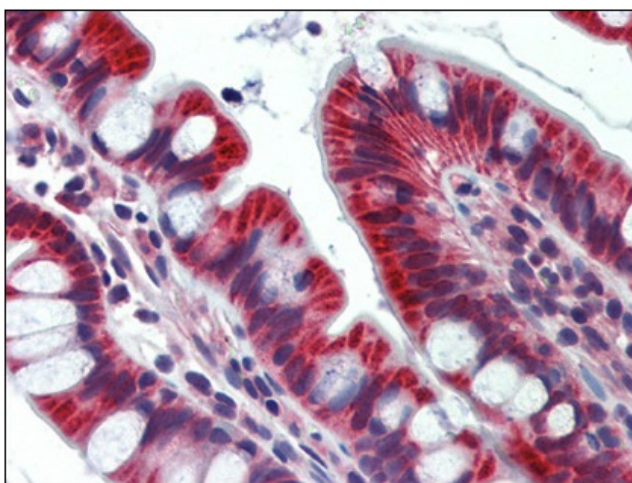
Western blot analysis of JPH4 in mouse brain tissue lysate with JPH4 antibody at 1 ug/ml in (A) the absence and (B) the presence of blocking peptide



Human Kidney: Formalin-Fixed, Paraffin-Embedded (FFPE)



Human Testis: Formalin-Fixed, Paraffin-Embedded (FFPE)



Human Small Intestine: Formalin-Fixed, Paraffin-Embedded (FFPE)