

Product datasheet for **AP23122PU-N**

ALDH5A1 (C-term) Rabbit Polyclonal Antibody

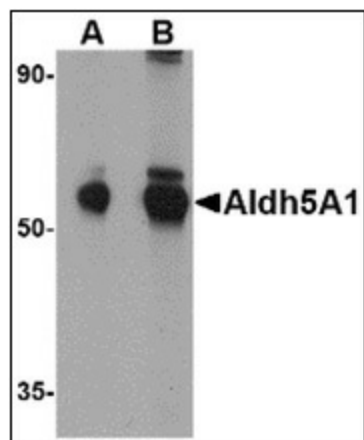
Product data:

Product Type:	Primary Antibodies
Applications:	IHC, WB
Recommended Dilution:	Immunohistochemistry on Paraffin Sections: 5 µg/ml. Western Blot: 1 - 2 µg/ml.
Reactivity:	Human, Mouse, Rat
Host:	Rabbit
Clonality:	Polyclonal
Immunogen:	22 amino acid peptide near the carboxy terminus of the human Aldh5A1
Specificity:	This antibody detects ALDH5A1 / SSADH (C-term).
Formulation:	PBS, 0.02% sodium azide State: Purified State: Liquid Ig fraction
Concentration:	lot specific
Purification:	Immunoaffinity chromatography
Conjugation:	Unconjugated
Storage:	Store at 2 - 8 °C for up to one month or (in aliquots) at -20 °C for longer. Avoid repeated freezing and thawing.
Stability:	Shelf life: one year from despatch.
Gene Name:	aldehyde dehydrogenase 5 family member A1
Database Link:	Entrez Gene 214579 Mouse Entrez Gene 291133 Rat Entrez Gene 7915 Human P51649
Synonyms:	SSADH; SSDH
Protein Families:	Druggable Genome
Protein Pathways:	Alanine, aspartate and glutamate metabolism, Butanoate metabolism, Metabolic pathways

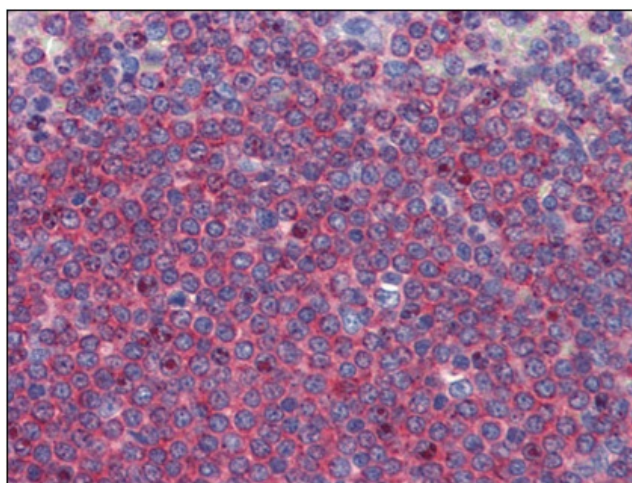


[View online »](#)

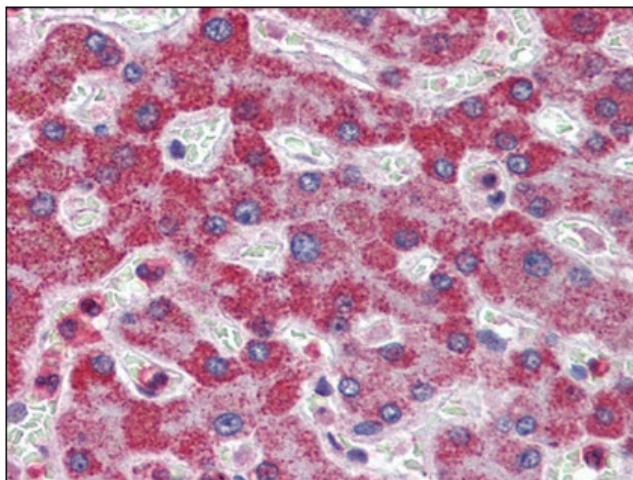
Product images:



Western blot analysis of Aldh5A1 in mouse liver lysate with Aldh5A1 antibody at (A) 1 and (B) 2 ug/ml.



Human Spleen: Formalin-Fixed, Paraffin-Embedded (FFPE)



Human Liver: Formalin-Fixed, Paraffin-Embedded (FFPE)