

Product datasheet for **AP23113PU-N**

CYP26A1 (485-496) Goat Polyclonal Antibody

Product data:

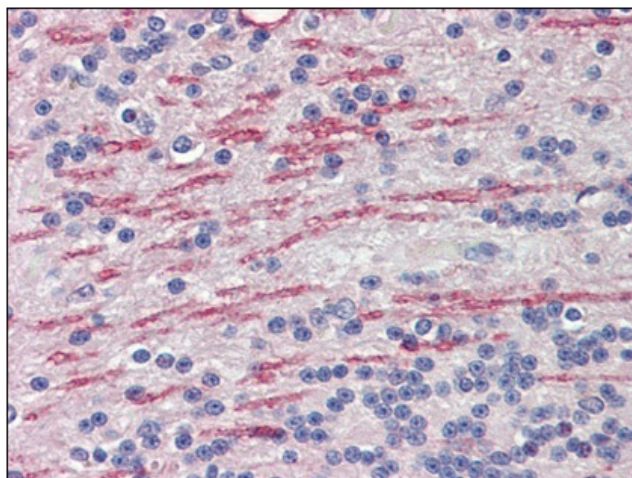
Product Type:	Primary Antibodies
Applications:	IHC
Recommended Dilution:	Immunohistochemistry on Paraffin Sections: 3.75 µg/ml.
Reactivity:	Human
Host:	Goat
Clonality:	Polyclonal
Immunogen:	Synthetic peptide from an internal region of human CYP26A1 (NP_000774.2; NP_476498.1)
Specificity:	This antibody detects CYP26A1 (Internal). It is expected to recognize both reported isoforms (NP_000774.2; NP_476498.1).
Formulation:	Tris saline, pH 7.3 containing 0.02% sodium azide as preservative and 0.5% BSA as stabilizer State: Aff - Purified State: Liquid purified Ig fraction
Concentration:	lot specific
Purification:	Immunoaffinity Chromatography
Conjugation:	Unconjugated
Storage:	Store the antibody undiluted at 2-8°C for one month or (in aliquots) at -20°C for longer. Avoid repeated freezing and thawing.
Stability:	Shelf life: one year from despatch.
Gene Name:	cytochrome P450 family 26 subfamily A member 1
Database Link:	Entrez Gene 1592 Human O43174
Background:	CYP26 / CYP26A1 is a member of the cytochrome P450 superfamily of enzymes. The cytochrome P450 proteins are monooxygenases which catalyze many reactions involved in drug metabolism and synthesis of cholesterol, steroids and other lipids. This endoplasmic reticulum protein acts on retinoids, including all-trans-retinoic acid (RA), with both 4-hydroxylation and 18-hydroxylation activities.
Synonyms:	Cytochrome P450 26A1, CYP26, Cytochrome P450RA11
Protein Families:	Druggable Genome, P450, Transmembrane



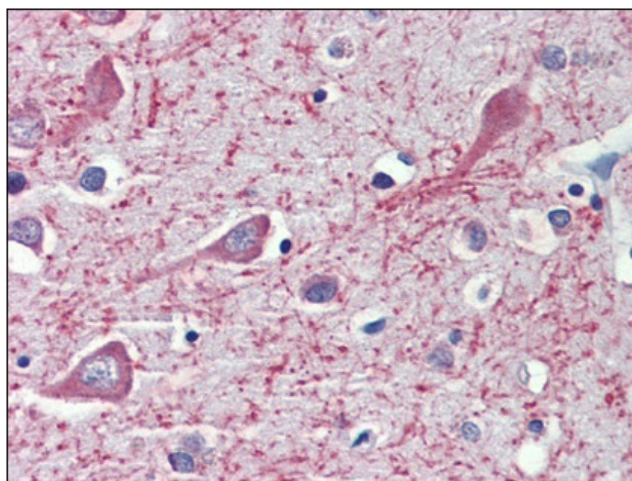
[View online »](#)

Protein Pathways: Retinol metabolism

Product images:



Brain, cerebellum, white matter, Human:
Formalin-Fixed, Paraffin-Embedded (FFPE)



Brain, cortex, Human: Formalin-Fixed, Paraffin-Embedded (FFPE)