

Product datasheet for **AP23110PU-N**

SFRP1 (171-183) Goat Polyclonal Antibody

Product data:

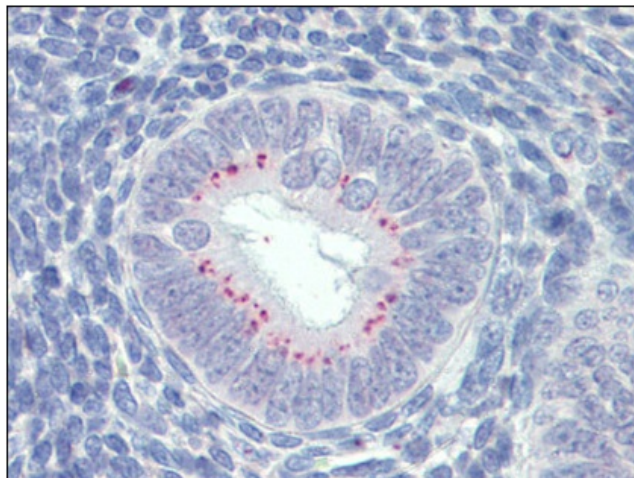
Product Type:	Primary Antibodies
Applications:	IHC
Recommended Dilution:	Immunohistochemistry on Paraffin Sections: 3.75 µg/ml.
Reactivity:	Human, Bovine, Bat, Canine, Equine, Monkey, Rat
Host:	Goat
Clonality:	Polyclonal
Immunogen:	Synthetic peptide from an internal region of human SFRP1 (NP_003003.3)
Specificity:	This antibody detects SFRP1 (Internal).
Formulation:	Tris saline, pH 7.3 containing 0.02% sodium azide as preservative and 0.5% BSA as stabilizer State: Aff - Purified State: Liquid purified Ig fraction
Concentration:	lot specific
Purification:	Immunoaffinity chromatography
Conjugation:	Unconjugated
Storage:	Store the antibody undiluted at 2-8°C for one month or (in aliquots) at -20°C for longer. Avoid repeated freezing and thawing.
Stability:	Shelf life: one year from despatch.
Gene Name:	secreted frizzled related protein 1
Database Link:	Entrez Gene 84402 Rat Entrez Gene 6422 Human Q8N474
Background:	SARP2 is a frizzled protein that lacks the 7-transmembrane motif used as anchor to the plasma membrane. Expression of SARP2 modifies the intracellular levels of beta-catenin, a molecule involved in the Wnt-frizzled signaling pathway. SARP2-expressing cells are more sensitive to apoptotic stimuli. SARP2 is expressed in several human tissues, with the highest levels in heart.
Synonyms:	SFRP-1, FRP-1, FRP1, FRP, SARP2, SARP-2
Protein Families:	Adult stem cells, Cancer stem cells, Druggable Genome, ES Cell Differentiation/IPS, Secreted Protein, Stem cell relevant signaling - Wnt Signaling pathway, Transmembrane



[View online »](#)

Protein Pathways: Wnt signaling pathway

Product images:



Uterus, Human: Formalin-Fixed, Paraffin-Embedded (FFPE)