

Product datasheet for **AP23108PU-N**

CMA1 (96-110) Goat Polyclonal Antibody

Product data:

Product Type:	Primary Antibodies
Applications:	IHC
Recommended Dilution:	Immunohistochemistry on Paraffin Sections: 1.5 - 3.75 µg/ml.
Reactivity:	Human, Monkey
Host:	Goat
Clonality:	Polyclonal
Immunogen:	Synthetic peptide from an internal region of human CMA1 / Mast Cell Chymase (NP_001827.1)
Specificity:	This antibody detects Mast Cell Chymase (Internal).
Formulation:	Tris saline, pH 7.3 containing 0.02% sodium azide as preservative and 0.5% BSA as stabilizer State: Aff - Purified State: Liquid purified Ig fraction
Concentration:	lot specific
Purification:	Immunoaffinity chromatography
Conjugation:	Unconjugated
Storage:	Store the antibody undiluted at 2-8°C for one month or (in aliquots) at -20°C for longer. Avoid repeated freezing and thawing.
Stability:	Shelf life: one year from despatch.
Gene Name:	chymase 1
Database Link:	Entrez Gene 1215 Human P23946
Background:	CMA1 / MCT1 / Chymase is a chymotryptic serine proteinase that belongs to the peptidase family S1. It is expressed in mast cells and is thought to function in the degradation of the extracellular matrix, the regulation of submucosal gland secretion, and the generation of vasoactive peptides. In the heart and blood vessels, this protein, rather than angiotensin converting enzyme, is largely responsible for converting angiotensin I to the vasoactive peptide angiotensin II.
Synonyms:	Alpha-chymase, Mast cell protease I, CMA1, CYH, CYM



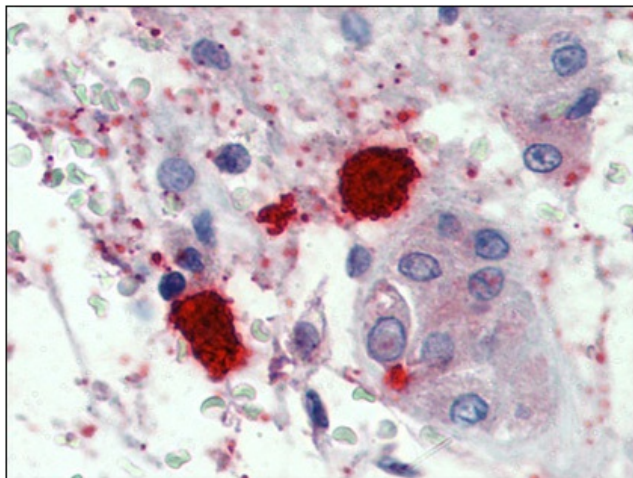
[View online »](#)

Note: Caution: The human mast cell protease I is not the same as the mouse mast cell protease II!

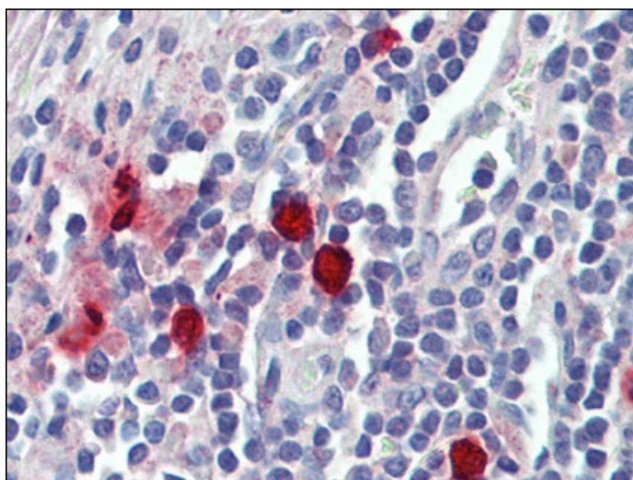
Protein Families: Druggable Genome, Protease, Secreted Protein

Protein Pathways: Renin-angiotensin system

Product images:



Testis, mast cells, Human: Formalin-Fixed, Paraffin-Embedded (FFPE)



Tonsil, mast cells, Human: Formalin-Fixed, Paraffin-Embedded (FFPE)